

**Illustrated Parts  
Breakdown**

**VIDEOJET®**

***TRIUMPH Series  
Printer***

P/N 365939-01  
Rev AG 10/02



recycled paper



---

**Videojet Technologies Inc.**

1500 Mittel Boulevard  
Wood Dale, IL  
60191-1073 USA  
[www.videojet.com](http://www.videojet.com)

Phone: 1-800-843-3610  
Fax: 1-800-582-1343  
Int'l Fax: 630-616-3629

© 2002 by Videojet Technologies Inc. All rights reserved.

**Offices** — USA: Atlanta, Chicago, Los Angeles, Philadelphia  
INT'L — Canada, France, Germany, Ireland, Japan,  
The Netherlands, Singapore, Spain, The United Kingdom  
**Distributors Worldwide**

© Copyright 2002 by **Videojet Technologies Inc.** All rights reserved. Printed in U.S.A.

No part of this book may be reproduced or utilized in any form or by any means, electronic or mechanical, including photocopying, recording or by any information storage and retrieval system, without written permission.

Inquires should be addressed to:

**Videojet Technologies Inc.**

1500 Mittel Boulevard

Wood Dale, IL 60191-1073

# 1

## Introduction

---

In this chapter you will find:

- general information on how to use this manual
- a description of the various **VIDEOJET**<sup>®</sup> Triumph Series manuals
- information on how to order replacement parts and accessories
- directions on how to contact Videojet Technologies Inc.

Refer to page 1-2 for a chapter-level Table of Contents.

## Chapter 1 Contents

<b>General Information .....</b>	<b>1-3</b>
Introduction .....	1-3
Who Should Use This <i>Illustrated Parts Breakdown</i> . ....	1-3
How to Use This <i>Illustrated Parts Breakdown</i> .....	1-4
<b>Other Manuals For Your VIDEOJET® Triumph Series Printer .....</b>	<b>1-5</b>
<i>Operator Manual</i> .....	1-5
<i>Service Manual</i> .....	1-5
<i>Service Manual Assembly</i> .....	1-5
Manuals in Other Languages .....	1-5
<b>Printer Part Numbers .....</b>	<b>1-6</b>
<b>Ordering Replacement Parts, Accessories and Special Tools .....</b>	<b>1-7</b>
How to Order.....	1-7
How to Contact Videojet Technologies Inc. ....	1-7

## General Information

### Introduction

This manual shows the replacement parts, and accessories, that are available for the **VIDEOJET®** Triumph Series printer.

Products described in this manual, and products that can be used with the system, are under continuous development and are subject to continuous improvement.

We at **Videojet Technologies Inc.** are always pleased to receive any suggestions on how we might improve this manual or any of the products described in it.

### Who Should Use This Illustrated Parts Breakdown

The *Illustrated Parts Breakdown* is intended for use only by qualified **Videojet Technologies Inc.** service personnel, and those customers who have qualified, trained service or maintenance personnel.



**WARNING:** Customers who intend to service and maintain the printer themselves must only have qualified personnel perform those procedures. Qualified personnel are considered to be those persons who have undergone the proper technical training (successful completion of a training course covering this equipment), have experience to work on this equipment, and are aware of the hazards to which they will be exposed.

## **How to Use This Illustrated Parts Breakdown**

In *Chapter 2, Replacement Parts*, a series of graphics shows various sections of the printer. In each graphic, parts are identified by key numbers. Determine the key number of the part you want, then refer to the related parts table. In the table, each key number is followed by the part number, description, and the number of parts required to complete that particular assembly. **Parts that are not called out are not available.**

Some items pertain to only one type of printer model. These items will be clearly identified.

If “SP” precedes a part number, that part is a specially packaged repair or replacement part. Be sure to include the prefix “SP” when ordering those parts.

Chapter 3 presents information on accessories, spare parts kits, and supplies for the **VIDEOJET®** Triumph Series printer.

## Other Manuals For Your VIDEOJET® Triumph Series Printer

### ***Operator Manual***

The *Operator Manual* (P/N 365936-01) includes specifications, safety information, and detailed directions on how to use the software. The *Operator Manual* is supplied with the printer, and is intended for use by operators of the printer.

The *Operator Manual* is available in *some* additional languages other than English. To order a manual other than English, order the same first six digits as the English version, and then add the appropriate 2-digit language extension. (Refer to Table 1-1 and Table 1-2, *Part Number Suffixes*, for a list of language suffixes).

### ***Service Manual***

The *Service Manual* (P/N 365937-01) includes a description of the major components of the printer, basic theory of operation, installation information, and maintenance and troubleshooting procedures. The *Service Manual* is intended for use only by qualified service personnel, as well as those customers who have trained, qualified service or maintenance personnel.

***NOTE: You must order the Service Manual Assembly (see below) to receive the IPB and any related addenda along with the Service Manual.***

### ***Illustrated Parts Breakdown***

The *Illustrated Parts Breakdown* (P/N 365939-01) contains a pictorial breakdown of the printer components, which can be ordered as replacement items.

### ***Service Manual Assembly***

The *Service Manual Assembly* consists of a 3-ring notebook binder containing the *Service Manual* (P/N 365937-01), the *Illustrated Parts Breakdown* (P/N 365939-01), and any related addenda. Customer Service Department.

There are two Service Manual Assembly numbers:

- Triumph and T120 Service Manual Assembly: (P/N 365938-01)
- Triumph Opaque Service Manual Assembly: (P/N 361054-01)

***These manuals are intended as a supplement to, not a replacement for, Videojet Technologies Inc. Customer Training.***



## Printer Part Numbers

The **VIDEOJET®** Triumph Series printer is available in many languages and configurations. In Table 1-1 below, the languages shown in **bold face type** are available for the Triumph printer. The Triumph Opaque and Triumph T120 languages are shown on Table 1-2 on the next page.

<b>Triumph Standard Printer</b>		
<b>P/N Suffix</b>		<b>Language</b>
<b>Type 1 Software</b>	<b>Type 2 Software</b>	
<b>01</b>	<b>51</b>	<b>**English (USA)</b>
<b>02</b>	<b>52</b>	<b>**French</b>
<b>03</b>	<b>53</b>	<b>**German</b>
<b>04</b>	<b>54</b>	<b>**Spanish</b>
<b>05</b>	<b>55</b>	<b>**Portuguese</b>
<b>06</b>	<b>56</b>	<b>Japanese</b>
<b>07</b>	<b>57</b>	<b>Russian</b>
<b>08</b>	<b>58</b>	<b>**Italian</b>
<b>09</b>	<b>59</b>	<b>**Dutch</b>
10	60	Chinese (Mandarin)
<b>11</b>	<b>61</b>	<b>Arabic</b>
12	62	Korean
13	63	Thai
14	64	Icelandic
<b>15</b>	<b>65</b>	<b>Norwegian</b>
<b>16</b>	<b>66</b>	<b>**Finnish</b>
<b>17</b>	<b>67</b>	<b>**Swedish</b>
<b>18</b>	<b>68</b>	<b>Danish</b>
19	69	Greek
20	70	Hebrew
<b>21</b>	<b>21</b>	<b>**English (European Standards - UK)</b> (All translations are based on European Standards English)
<b>23</b>	<b>73</b>	<b>Polish</b>

**Table 1-1. Triumph Printer Part Number Suffixes**

\*\*The Triumph Operator Manual is available in this language.

<b>Triumph Opaque and Triumph T120 Printer</b>	
<b>P/N Suffix</b>	<b>Language</b>
<b>01</b>	<b>**English (USA)</b>
<b>02</b>	<b>**French</b>
<b>03</b>	<b>**German</b>
<b>04</b>	<b>**Spanish</b>
<b>05</b>	<b>**Portuguese</b>
06	Japanese
07	Russian
<b>08</b>	<b>**Italian</b>
<b>09</b>	<b>**Dutch</b>
10	Chinese (Mandarin)
<b>11</b>	<b>Arabic</b>
12	Korean
13	Thai
14	Icelandic
<b>15</b>	<b>Norwegian</b>
<b>16</b>	<b>**Finnish</b>
<b>17</b>	<b>**Swedish</b>
<b>18</b>	<b>Danish</b>
19	Greek
20	Hebrew
<b>21</b>	<b>**English (European Standards - UK)</b> (All translations are based on European Standards English)
<b>23</b>	<b>Polish</b>

**Table 1-2. Triumph Opaque and Triumph T120 Part Number Suffixes**

\*\*The Triumph Operator Manual is available in this language.

## Ordering Replacement Parts, Fluids, and Accessories

### How to Order

For your convenience, replacement parts, fluids, and accessories can be ordered from **Videojet** telephone, by fax, or through our Internet ordering service. Please have the following information available to ensure quick, easy, and accurate service.

- Your customer number
- Your name and telephone number
- Your P.O. (Purchase Order) number
- Your preferred method of delivery
- The part number and quantity of all items required

#### To Order by Telephone 1-800-843-3610

Call **Videojet** at **1-800-843-3610** and speak to one of our Customer Service Representatives. Telephone hours are 7:00 a.m. to 7:00 p.m., Monday through Friday (Central Standard or Daylight Time). In emergencies, please contact our 24-hour Technical Assistance Department at the same telephone number.

#### To Order by Fax 1-800-582-1343 (USA) 630-616-3629 (Int'l)

Fax your order to **Videojet** at **1-800-582-1343**. Fax orders can be sent 24 hours a day, 7 days a week. Our international fax number is **630-616-3629**.

#### To Order over the Internet [www.videojet.com](http://www.videojet.com)

Contact **Videojet** at [www.videojet.com](http://www.videojet.com). Web orders can be placed 24 hours a day, 7 days a week. You can also view invoice status, and payment and sales order history on this site.

### For Technical Assistance

For technical assistance, contact **Videojet** at **1-800-843-3610** (for customers within the United States). Outside the U.S., contact your **Videojet** distributor or subsidiary for assistance. Technical assistance is available 24 hours a day, 7 days a week.

**Videojet Technologies Inc.**  
1500 Mittel Boulevard  
Wood Dale, IL 60191-1073, U.S.A.

# 2

## Replacement Parts

---

In this chapter you will find a list of the replacement parts available for the **VIDEOJET®** Triumph Series printer.

Refer to page 2-2 for a chapter level Table of Contents.

## Chapter 2 Contents

Using the Replacement Parts List .....	2-3
Printer Cabinet, Interior (Hydraulics Compartment).....	2-4
Printer Cabinet, Interior (Pneumatics Compartment).....	2-6
Printer Cabinet, Interior (Electrical Compartment) .....	2-8
Cabinet, Internal Detail .....	2-10
<b>VIDEOJET®</b> Triumph Series Controller .....	2-12
Ink Module/Manifold Assembly (P/N SP374833).....	2-13
Ink Module/Manifold Assembly (P/N SP374833).....	2-14
Ink Module/Manifold Assembly, Components Module View .....	2-16
Ink Module/Manifold Assembly, Components Manifold View.....	2-18
Ink Module/Manifold Assembly, Components Manifold View (Continued) .....	2-20
Ink Module/Manifold Assembly, Components Internal View.....	2-22
Printhead and Umbilical .....	2-24
Umbilical, Printhead End .....	2-26
Printhead.....	2-28
Autoflush Assembly (SP390051) ( <i>Triumph Printer Only</i> ) .....	2-30
Autoflush Assembly (SP390051) ( <i>Triumph Printer Only</i> ) (Continued) .....	2-32
Ink Circulator Pump Assembly (SP374804) ( <i>Triumph Opaque Only</i> ) .....	2-34
Ink Circulator Pump Assembly (SP374804) ( <i>Triumph Opaque Only</i> ) (Continued).....	2-36
Ink Module/Manifold Assembly ( <i>Older Triumph and T120 Printers Only</i> ) .....	2-38
Ink Module Components ( <i>Older Triumph and T120 Printers Only</i> ) .....	2-40
Air Manifold Components ( <i>Older Triumph Series Printers Only</i> ) .....	2-42
Ink Module, Internal View ( <i>Older Triumph Series Printers Only</i> ).....	2-44

*Note: If you received this IPB as a replacement IPB, you may have an older style Ink Module and Air Manifold Assembly. To order replacement parts for this older style ink module or manifold, refer to the assembly listed below:*

*Ink Module/Air Manifold Assembly*

*(Starts on Page 2-38)*

## Using the Replacement Parts List

In this chapter, a series of graphics shows various sections of the printer. In each graphic, parts are identified by key numbers. Determine the key number of the part you want, then refer to the related parts table. In the table, each key number is followed by the part number, description, and the number of parts required to complete that particular assembly

### **Parts that are not called out are not available.**

If a part number is preceded by “SP,” that part is a specially packaged repair or replacement part. Make sure to include the prefix “SP” when ordering those parts.

Some parts apply to only one or more Triumph printer models. Make sure to only order parts applicable to your printer unit.

*If you received this IPB as a replacement IPB (not included with your printer), refer to the Table of Contents on the previous page to ensure that you reference the correct Ink Module/Air Manifold Assembly.*

## Printer Cabinet, Interior (Hydraulics Compartment)

Parts List Follows on Page 2-5.

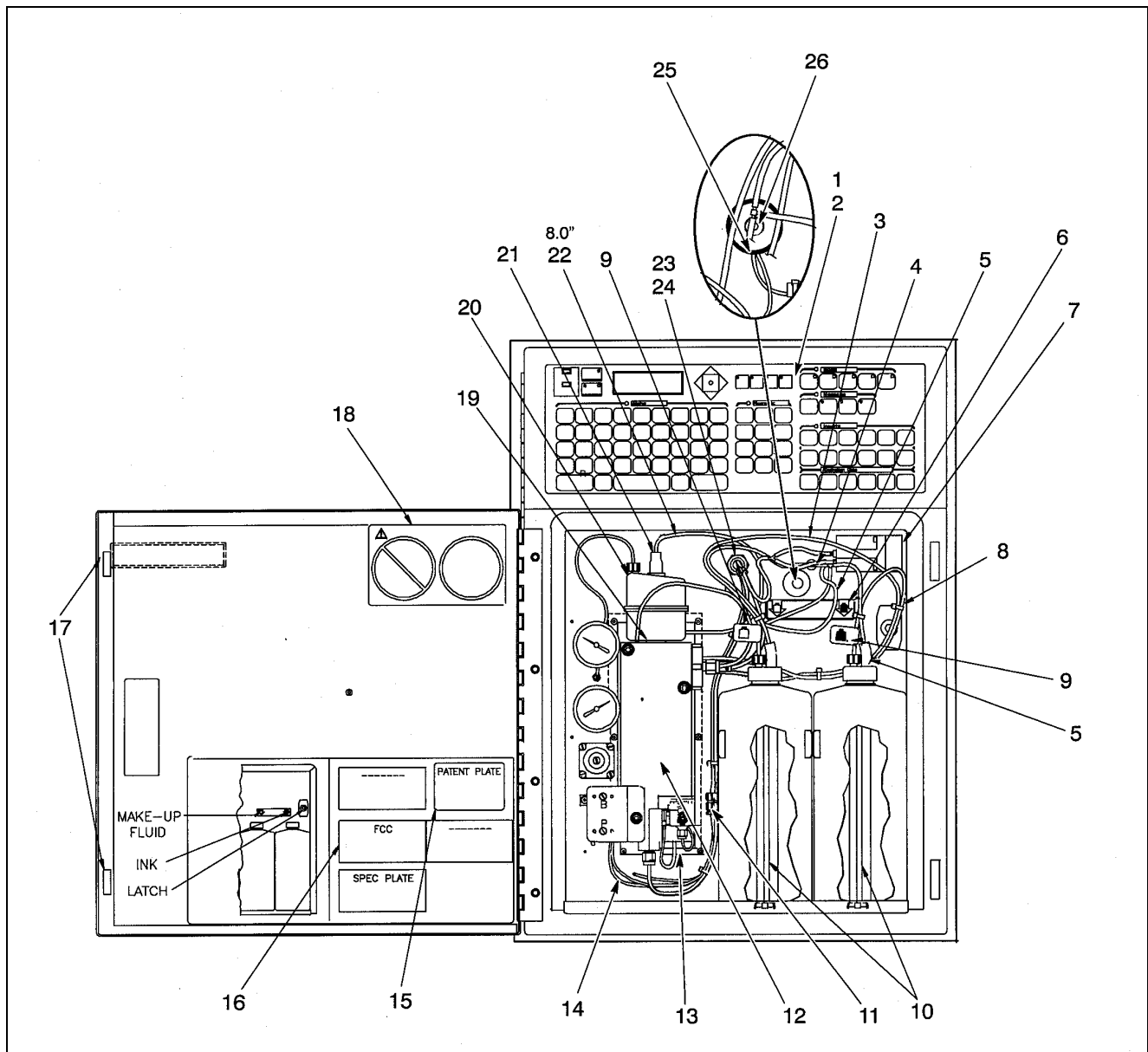


Figure 2-1. Hydraulics Compartment

**VIDEOJET® Triumph Series Illustrated Parts Breakdown**

Key No.	Part No.	Description	Quantity
1	SP374651-XX	KEYBOARD MODULAR, TRIUMPH, (includes keyboard and inserts). <i>Refer to the part number language suffixes on pages 1-6 and 1-7.</i>	1
2	374651-XX	INSERTS, KEYBOARD MODULAR, TRIUMPH SERIES	1
3	370015	TUBE W/RESTRICTOR, MAKE-UP ADD	
4	250496	GROMMET, RUBBER, .125 ID	1
5	370014	TUBE, BUBBLER ASSY	1
6	370040	LABEL, INK, MAKE-UP	1
7	SP390051	(Triumph Printer Only) PUMP, TRIUMPH, AF, ASSY, PKGD. <i>For a complete parts breakdown of this assembly, refer to Figures 2-14 and 2-15.</i>	1
7	SP374804	(Triumph Opaque Only) PUMP, CIRCULATOR ASSEMBLY. <i>For a complete parts breakdown of this assembly, refer to Figures 2-16 and 2-17.</i>	1
8	370320	INK SUPPLY LINE ASSY	1
9	370197	LABEL, SUPPLY LINE, INK-MAKEUP ADD	2
10	SP370551	FILTER, BOTTLE, INK - MAKEUP	1
10	SP374802	(Triumph Opaque Only) FILTER, BOTTLE, INK	1
11	210696	ORIFICE & FILTER	1
12	SP374825	MODULE, ASSY INK. <i>For a complete parts breakdown of this assembly, refer to Figures 2-6, 2-7, and 2-10.</i>	1
13	370160	GASKET, INK SYSTEM	1
14	208294	TUBING, PLASTIC, .050 ID	3 FT.
15	353111	PLATE, PATENT	1
16	207182	LABEL, FCC COMPLIANCE	1
17	206062	MAGNET, PERMANENT, DOOR CATCH	2
17	212754	(Opaque Only) INTERLOCK MAGNET	1
18	371173	LABEL, WARNING, ANTI-TIP, STAND	1
19	205782	O-RING, .424 ID	1
20	SP370246	FILTER, VACUUM, W/ O-RING	1
21	205183	TUBING, EXTRUDED, 11/64 ID, EPDM, BUTL	0.2 FT.
22	206889	TUBING, BLACK POLYETHYLENE, .170 ID X .250" OD	0.7 FT.
23	370740	FITTING, PRINthead	1
24	206948	FITTING, TUBE, ML, 3/8 TO 1/4 NPT	1
25	390067	(Triumph T120 Only) RESTRICTOR, RETURN LINE	1
26	212277	(Triumph T120 Only) NUT, THUMB M4	1



## Printer Cabinet, Interior (Pneumatics Compartment)

Parts List Follows on Page 2-7.

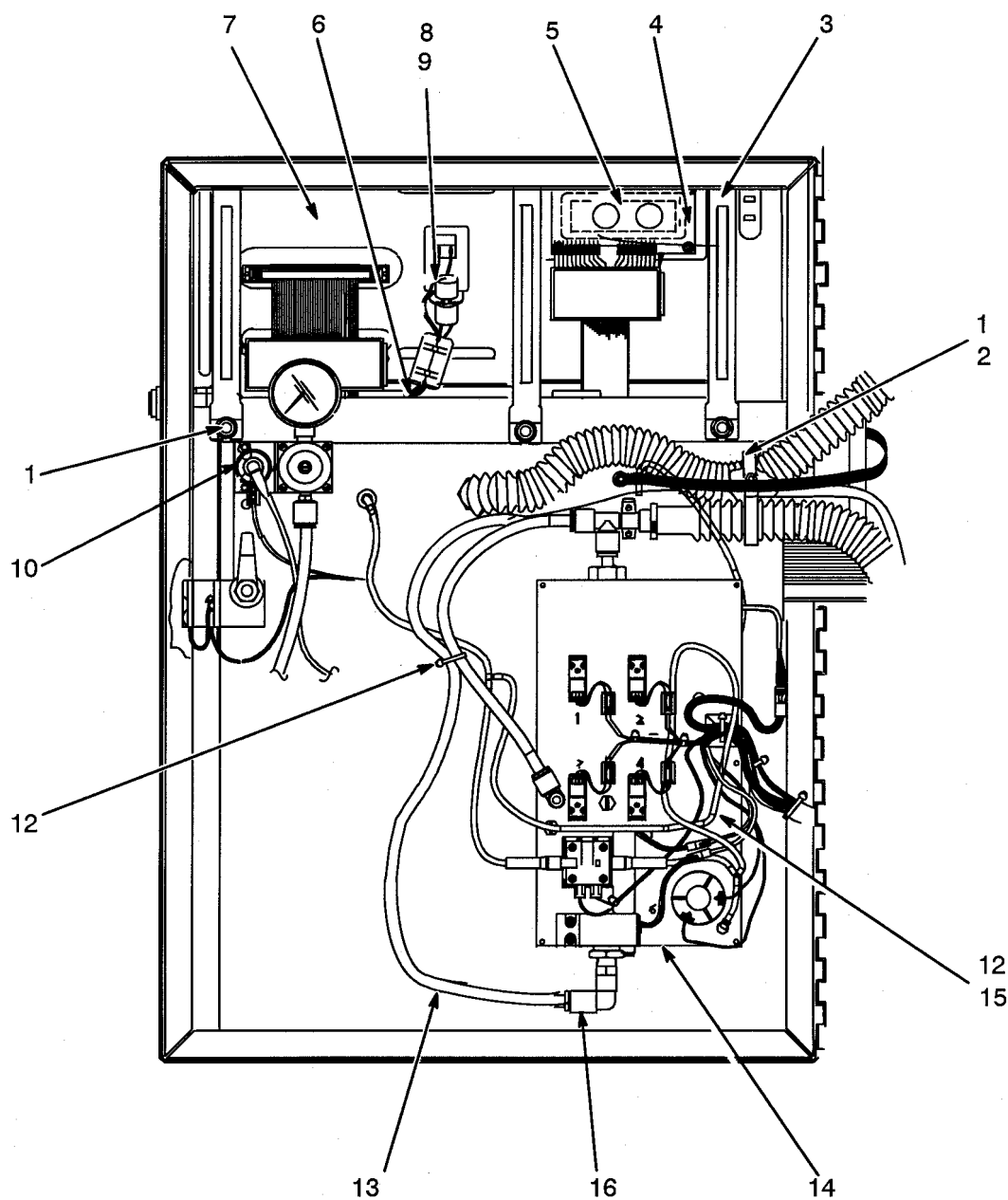


Figure 2-2. Pneumatics Compartment

**VIDEOJET® Triumph Series Illustrated Parts Breakdown**

Key No.	Part No.	Description	Quantity
1	208338	NUT, KEPS, M4	15
2	85021400	CLAMP, CABLE	5
3	374717	RETAINER, KEYBOARD	3
4	11958801	WASHER, SPLIT	4
5	370224	LIQUID CRYSTAL DISPLAY ASSEMBLY	1
6	370768	HARNESS, LOCK-IN, KEYBOARD	1
7	374716	MOUNTING PLATE	1
8	208400	KNOB, MOLDED, .125 DIA. HOLE	1
9	021203	WASHER, FLAT	1
10	SP390051	(Triumph Printer Only) PUMP, AUTOFLUSH ASSEMBLY. <i>For a complete parts breakdown of this assembly, refer to Figures 2-14 and 2-15.</i>	1
10	SP374839	(Triumph Opaque Only) PUMP, CIRCULATOR, ASSEMBLY. <i>For a complete parts breakdown of this assembly, refer to Figures 2-16 and 2-17.</i>	1
12	250077	TIE, CABLE, NYLON	23
13	204498	TUBING, POLYETHYLENE	3.25 FT.
14	SP374839	MANIFOLD, AIR, ASSEMBLY. <i>For a complete parts breakdown of this assembly, refer to Figures 2-8 and 2-9.</i>	1
15	208309	MOUNT, ADHESIVE	6
16	212769	FITTING TUBE, PLUG IN “Y”	1

## Printer Cabinet, Interior (Electrical Compartment)

Parts List Follows on Page 2-9.

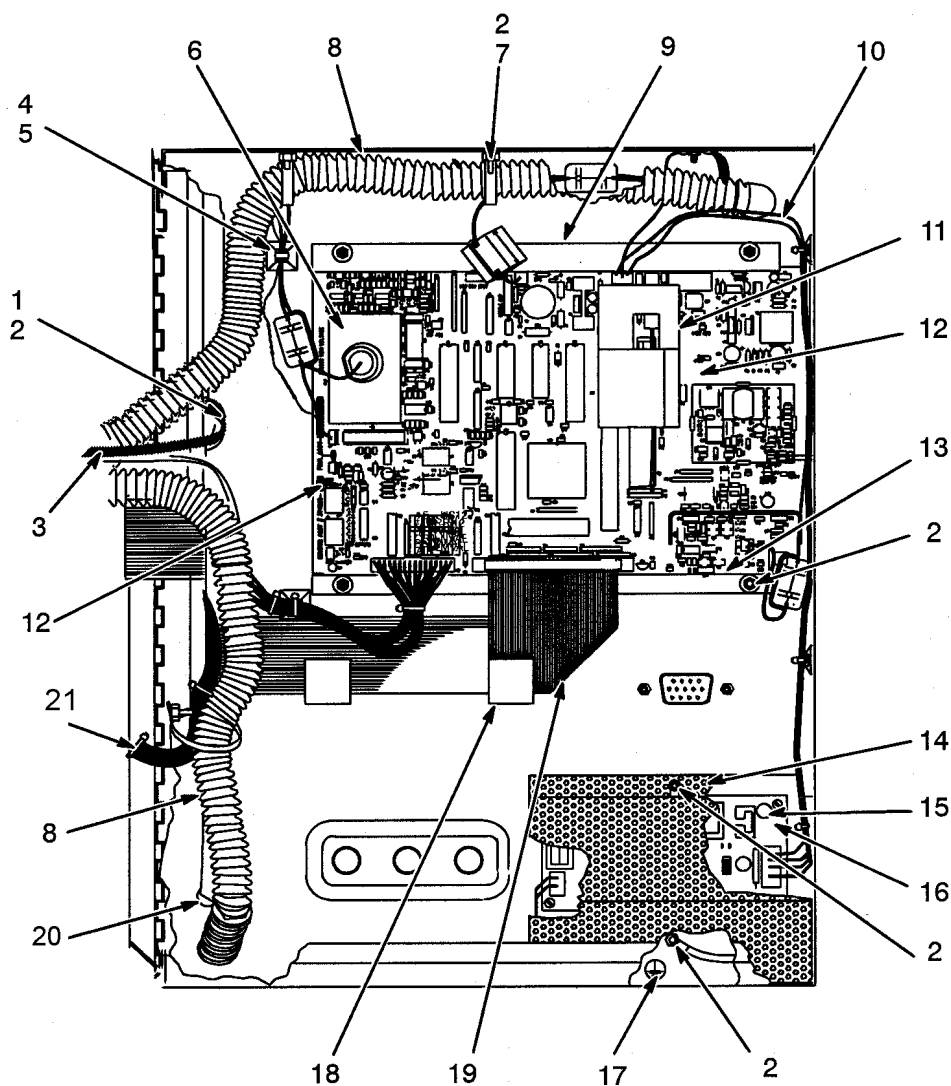


Figure 2-3. Electrical Compartment

**VIDEOJET® Triumph Series Illustrated Parts Breakdown**

Key No.	Part No.	Description	Quantity
1	001706	WASHER, LOCK	7
2	208338	NUT, KEPS, M4	15
3	208744	STRAP, GROUND	1
4	208309	MOUNT, ADHESIVE	6
5	250077	TIE, CABLE, NYLON	23
6	370219	INSULATOR, MYLAR	1
7	85021400	CLAMP, CABLE	5
8	210852	TUBING, CORRUGATED	2
9	370018	BLOCK, MOUNTING, P.C., UPPER	1
10	370103	HARNESS, D.C.	1
11	374738	CUSHIONER ASSEMBLY, FOAM	1
12	SP374735-XX	**PCB CONTROLLER BOARD, <i>TRIUMPH</i> , TYPE 1	1
12	SP374735-XX	**PCB CONTROLLER BOARD, <i>TRIUMPH</i> , TYPE 2	1
12	SP374740-XX	**PCB, CONTROLLER BOARD, <i>TRIUMPH OPAQUE</i> , TYPE 1	1
12	SP374745-XX	**PCB, CONTROLLER BOARD, <i>TRIUMPH OPAQUE</i> , TYPE 2	1
12	SP374770-XX	**PCB CONTROLLER BOARD, <i>TRIUMPH TI20</i> , TYPE 1	1
12	SP374775-XX	**PCB CONTROLLER BOARD, <i>TRIUMPH TI20</i> , TYPE 2	1
13	370019	BLOCK, MOUNTING, P.C., LOWER	1
14	370023	COVER, A/C, INPUT	1
15	208337	SCREW, M4 x 6, PANHEAD	4
16	370069	POWER SUPPLY	1
17	208263	MARKER, N.E.C.	1
18	202348	CLAMP, CABLE	7
19	370104	CABLE, RIBBON	1
21	208301	GROMMET, RUBBER	1
22	374728	HARNESS ASSEMBLY, SOLENOID	1

*\*\*For a list of parts in this assembly, refer to Figure 2-5 on Page 2-12).*

*\*\*Refer to language suffixes on pages 1-6 and 1-7.*

## Cabinet, Internal Detail

Parts List Follows on Page 2-11.

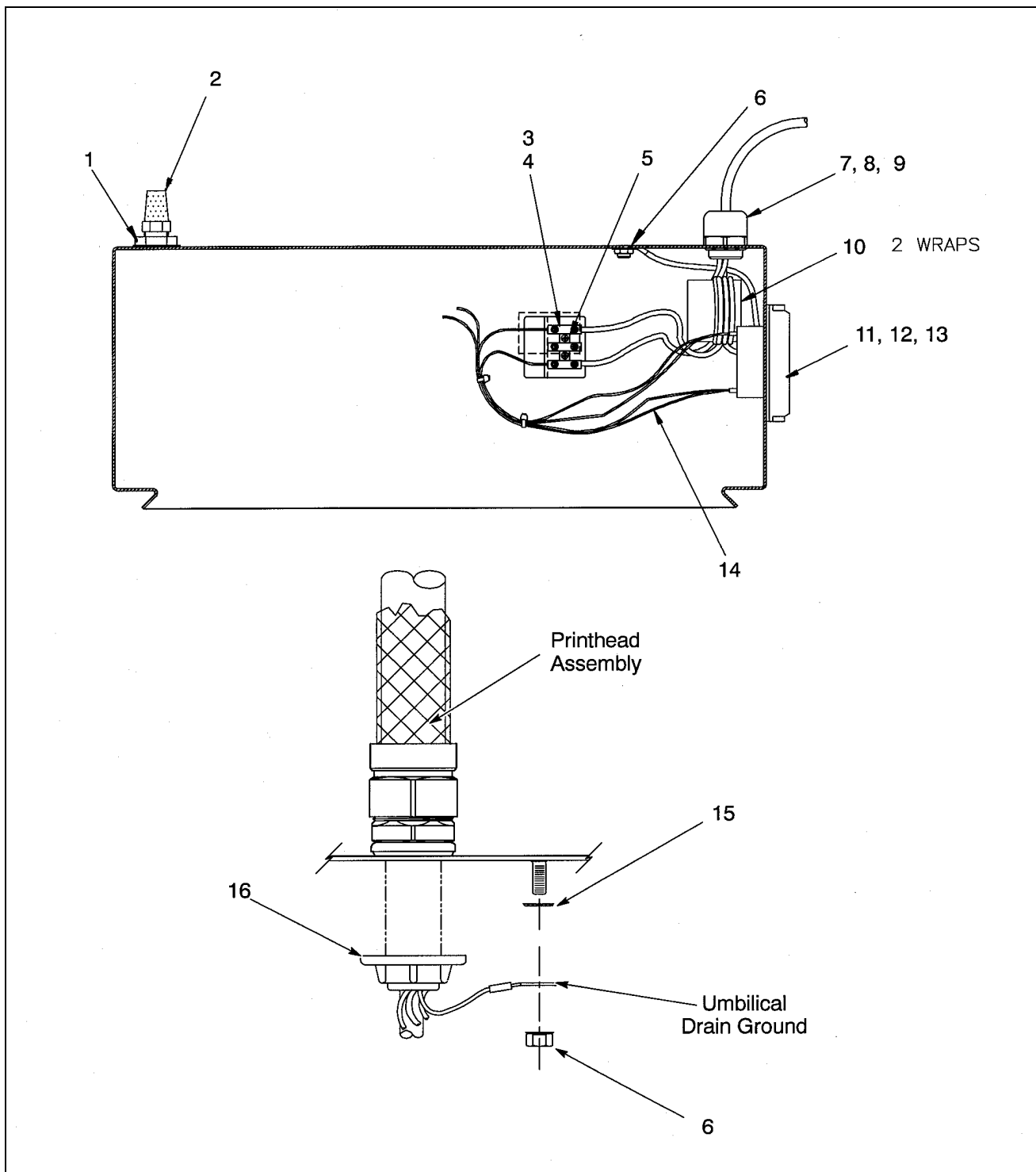


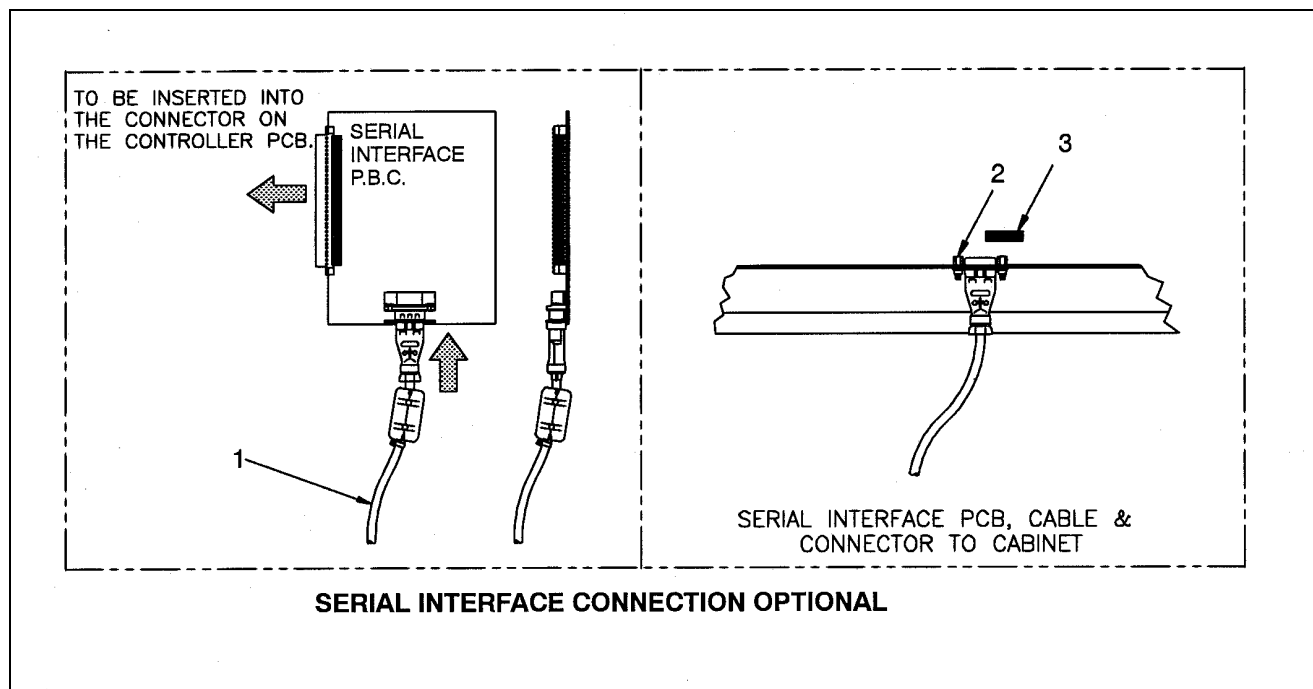
Figure 2-4. Cabinet, Internal Detail

**VIDEOJET® Triumph Series Illustrated Parts Breakdown**

Key No.	Part No.	Description	Quantity
1	374529	FITTING, EXHAUST, TRIUMPH	1
2	206041	MUFFLER, AIR, PNEUMATIC EXHAUST	1
3	206036	BLOCK, TERMINAL, 3POS, 10mm CTRS	1
4	206037	LABEL, STRIP, MARKING, L, N	1
5	208335	SCREW, M3 X 16, PHIL HD, ZN PLT.	2
6	208338	NUT, KEPS, M4	13
7	208917	CONNECTOR, CORD, STRAIN RELF, 1/2" NPT	1
8	203667	NUT, LOCK, CONDUIT FITTING, 1/2 NPT	1
9	206275	GASKET, 1/2 NPT	1
10	207251	FERRITE AND CASE, ASSY	2
11	208336	SCREW, SOCKET HD, M4 X 8	2
12	208031	SWITCH/CIRCUIT BREAKER, 2 POLE, 1AMP	1
13	209058	COVER, WATERPROOF, ROCKER SWITCH	1
14	370108	HARNESS, INPUT, AC	1
15	001706	WASHER, LOCK, EXTERNAL, .199 ID	7
16	206996	NUT, LOCK, 1/2 CONDUIT, ZN PLT.	1

# **VIDEOJET® Triumph Series Controller**

Parts List Shown Below



**Figure 2-5. VIDEOJET® Triumph Series Controller**

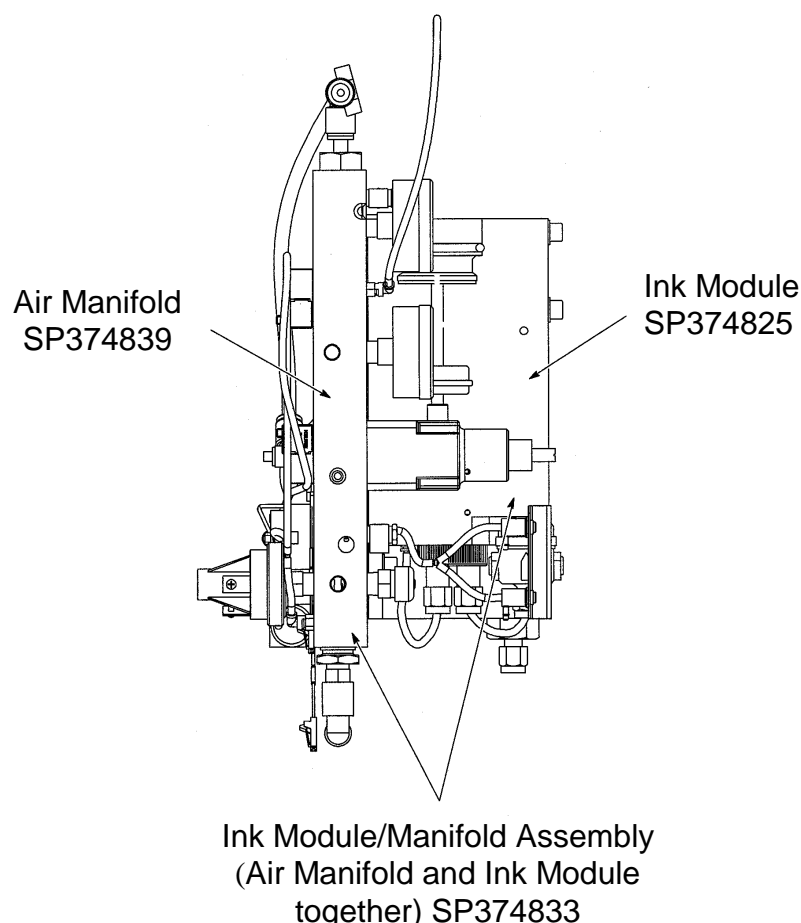
Key No.	Part No.	Description	Quantity
	SP374735-XX	PCB CONTROLLER BOARD, <i>TRIUMPH</i> , TYPE 1 <i>Refer to language suffixes on page 1-6 and 1-7.</i>	1
	SP374735-XX	PCB CONTROLLER BOARD, <i>TRIUMPH</i> , TYPE 2 <i>Refer to language suffixes on page 1-6 and 1-7.</i>	1
	SP374740-XX	PCB, CONTROLLER BOARD, <i>TRIUMPH OPAQUE</i> , TYPE 1 <i>Refer to language suffixes on page 1-6 and 1-7.</i>	1
	SP374745-XX	PCB, CONTROLLER BOARD, <i>TRIUMPH OPAQUE</i> , TYPE 2 <i>Refer to language suffixes on page 1-6 and 1-7.</i>	1
	SP374770-XX	**PCB CONTROLLER BOARD <i>TRIUMPH T120</i> , TYPE 1 ASS'Y <i>Refer to languages suffixes on page 1-6 and 1-7.</i>	1
	SP374775-XX	**PCB CONTROLLER BOARD <i>TRIUMPH T120</i> , TYPE 2 ASS'Y <i>Refer to languages suffixes on page 1-6 and 1-7.</i>	1
1	370765	CABLE, INTERFACE, SERIAL, INTERNAL	1
2	208544	SCREW, JACK, 3/16 HEX	2
3	212487	CAP, NON THREADED, 9 PIN PLUG 'D', BLACK	1

## Ink Module/Manifold Assembly (P/N SP374833)

The Triumph **Ink Module/Manifold Assembly** is shown below. The entire Ink Module/Manifold Assembly can be ordered or only certain sections or individual parts can be ordered:

- To order the entire **Ink Module/Manifold Assembly**, order P/N SP374833.
- To order the **Ink Module Assembly with Gasket** only (does not include the Air Manifold with Fittings), order P/N SP374825
- To order the **Air Manifold Assembly with Fittings** only (does not include the Ink Module Assembly with Gasket), order P/N SP374839.

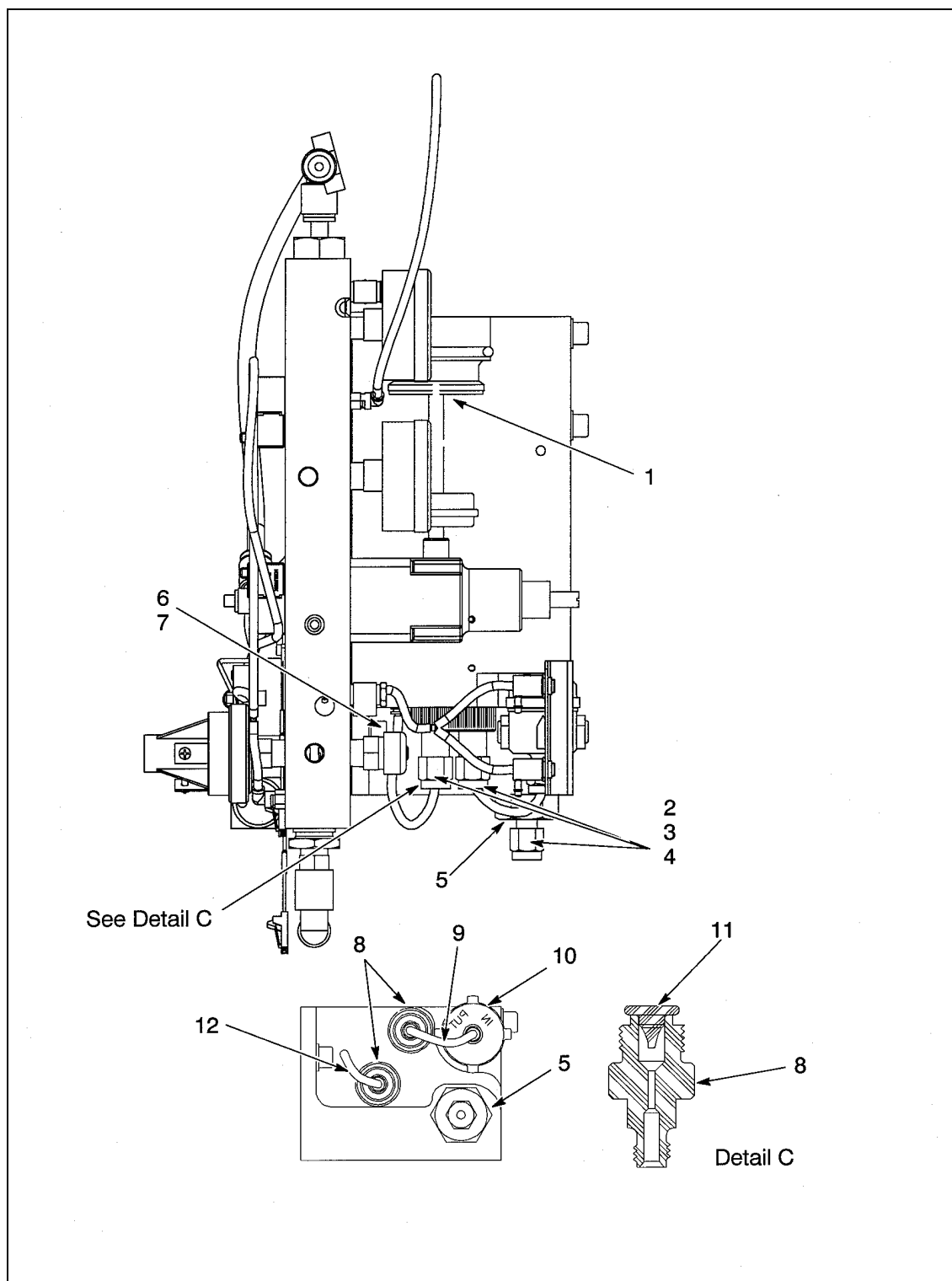
Individual parts lists for the Ink Module follow (refer to Figures 2-6, 2-7, 2-8, 2-9, 2-10).





**Ink Module/Manifold Assembly (P/N SP374833)**

*Parts List Follows on Page 2-15.*



**Figure 2-6. Ink Module/Manifold Assembly**

**VIDEOJET® Triumph Series Illustrated Parts Breakdown**

<b>Key No.</b>	<b>Part No.</b>	<b>Description</b>	<b>Quantity</b>
1	SP370185	CAP & STEM ASSY	1
2	203324	FITTING TUBE, N	4
3	203323	FITTING, TUBE, F	4
4	203322	FITTING, TUBE, F	4
5	370155	CAP, PRESSURE	1
6	212726	SCREW, M5-15MM	1
7	208343	WASHER, FLAT	4
8	374809	FITTING, CHECK	2
9	SP374828	TRANSFER TUBE ASSY.	1
10	SP375007-01	FILTER, INK, ASSY	1
11	207407	VALVE, COMBINATION	2
12	204499	TUBING, TEFLON	1

## Ink Module/Manifold Assembly, Components Module View

Parts List Follows on Page 2-17.

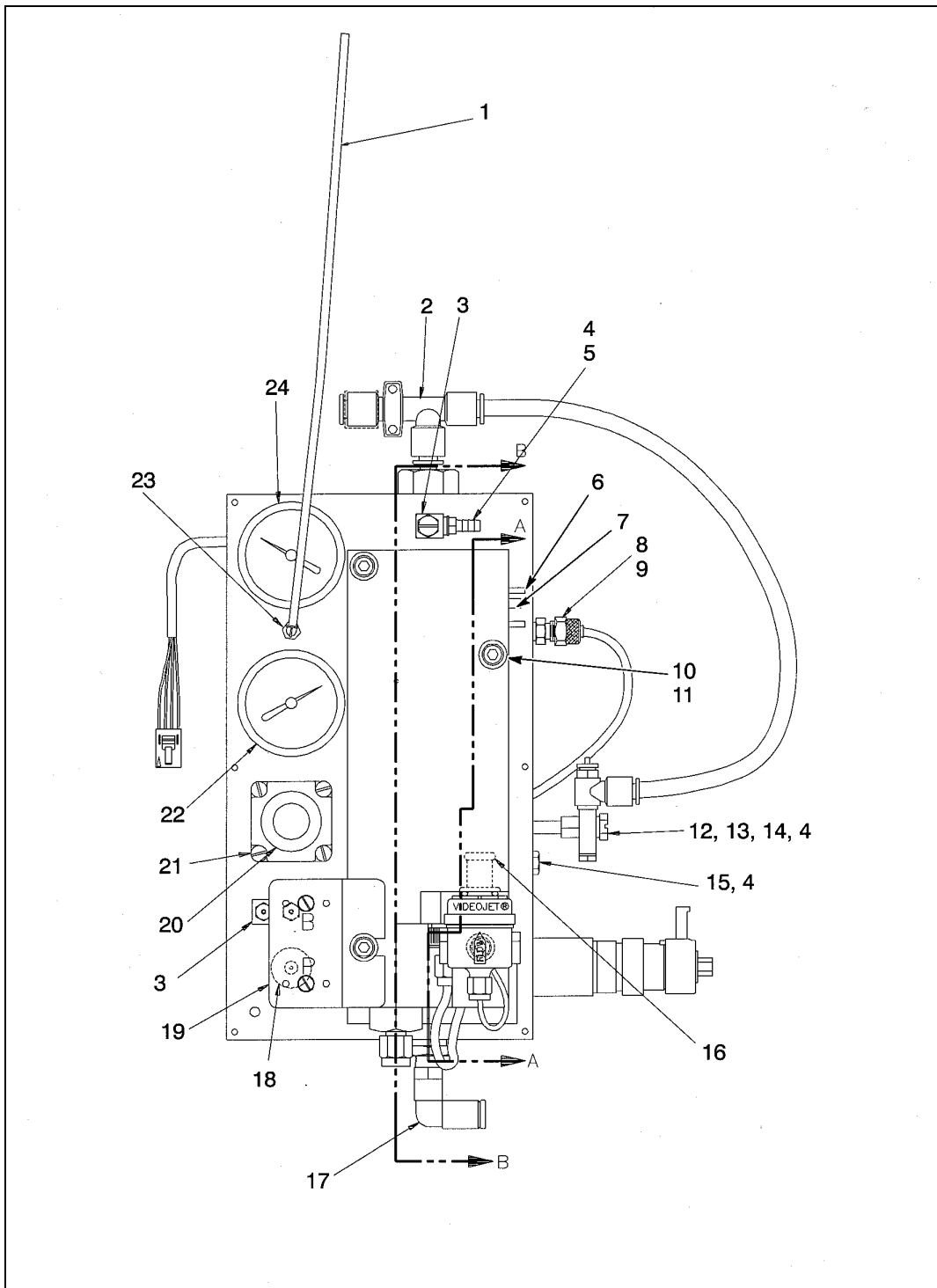


Figure 2-7. Ink Module Assembly

**VIDEOJET® Triumph Series Illustrated Parts Breakdown**

Key No.	Part No.	Description	Quantity
1	206728	TUBING EXTRUDED, .62 ID X .125.	5.31
2	202267	ASPIRATOR	1
3	210926	FITTING, TUBE, ADJ., "L"	2
4	201872	GASKET, 3/16 ID	9
5	210927	FITTING, TUBE	1
6	355064	TUBE, INPUT, RES	2
7	355641	TUBE, MODULE	1
8	204476	FITTING CONNECTOR, TUBING, 10-32, 1/8 TB	1
9	209150	NUT, SLEEVE 1/8	1
10	208323	SCREW, M5 X 90 MM SOCKET, STEEL	3
11	208343	WASHER, FLAT, M5, STEEL	4
12	210955	VALVE, NEEDLE	1
13	212009	FITTING, TEE	1
14	208763	FITTING EXTENSION	1
15	210962	PLUG, HOLE, #1	2
16	208432	O-RING #108	1
17	208304	FITTING, TUBE, ELBOW, MALE	1
18	206010	VALVE, RELIEF	1
19	SP390021	BRACKET, ASSY, NEEDLE VALVE	1
20	SP208266	REGULATOR, AIR, 0-100 PSI	1
21	208345	SCREW, M2X.5X30	4
22	SP208270	GAUGE, PRESSURE, 0-60 PSI, 1/8 BACK MT.	1
23	208302	FITTING, BARBED, SWIVEL, ELBOW	6
24	SP208271	GAUGE, VACUUM, 0-30 IN HG, BACK MT.	1

## Ink Module/Manifold Assembly, Components Manifold View

Parts List Follows on Page 2-19.

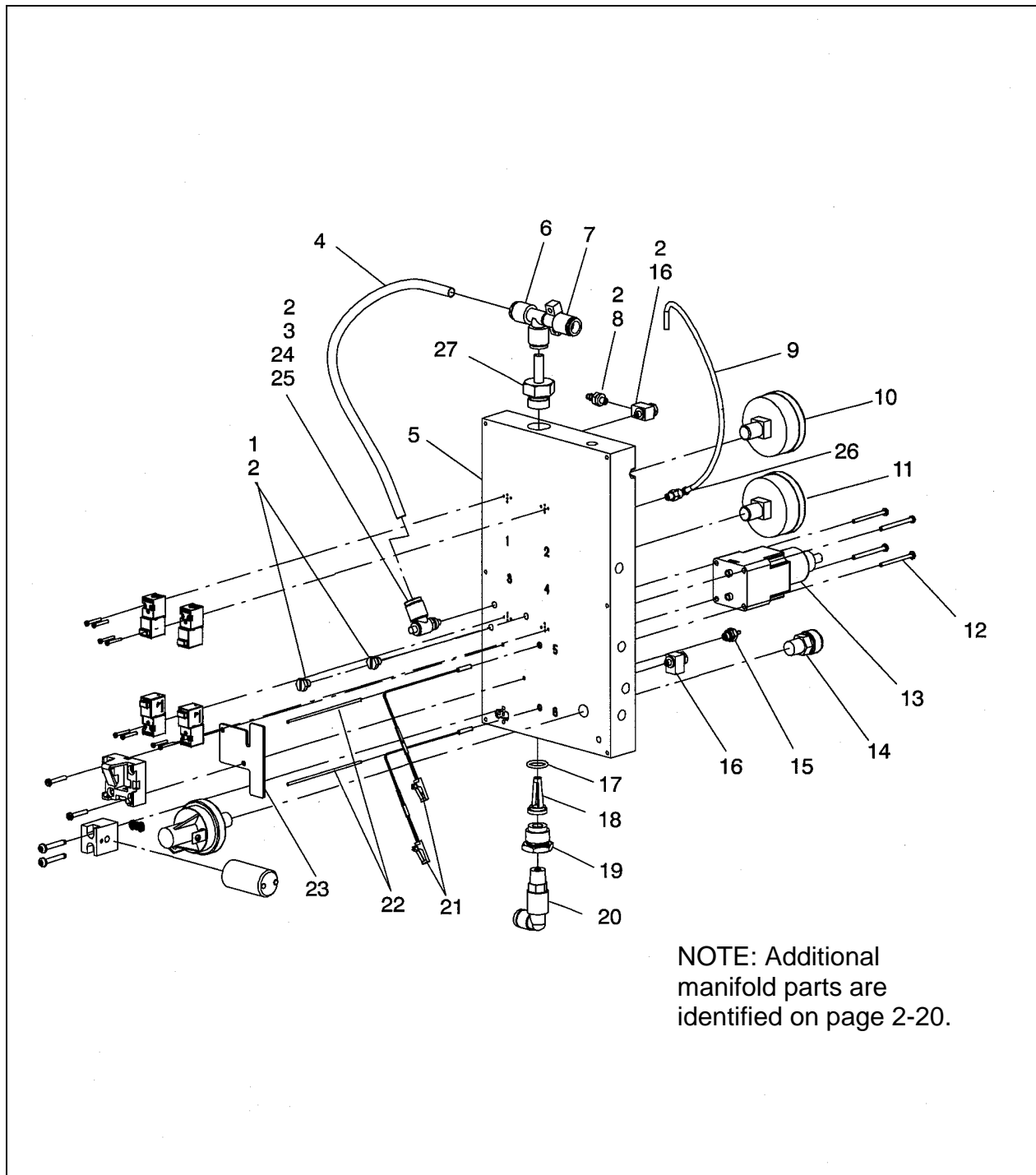


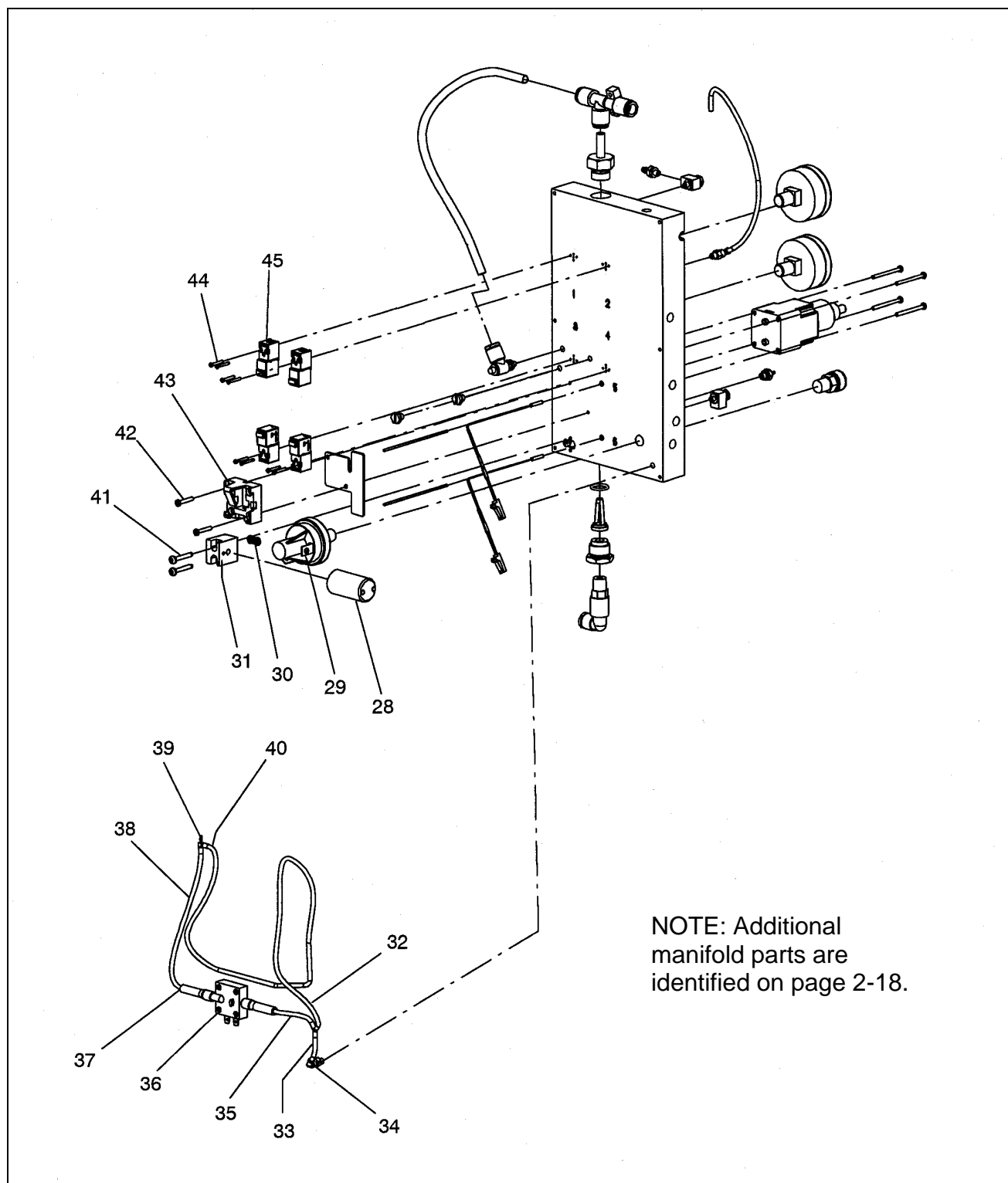
Figure 2-8 Air Manifold Assembly

**VIDEOJET® Triumph Series Illustrated Parts Breakdown**

Key No.	Part No.	Description	Quantity
1	210962	PLUG, HOLE, #10-32	2
2	201872	GASKET, 3/16" ID	9
3	210955	VALVE, NEEDLE	1
4	204498	TUBING, POLYETHYLENE, ¼" OD	.90 FT.
5	374838	MANIFOLD	1
6	208267	ASPIRATOR, AIR	1
7	205811	TUBING, TEFLON, .5" ID	.05 FT.
8	210927	FITTING, TUBE	1
9	206728	TUBING, EXTRUDED, .062" ID x .125 OD	9.5 IN.
10	SP208271	GAUGE, VACUUM, 0-30 IN HG, BACK-MOUNTED	1
11	SP208270	GAUGE, PRESSURE, 0-60 PSI, BACK-MOUNTED	1
12	208345	SCREW, M2 X .5 X 30, PHILLIPS HEAD	4
13	208266	REGULATOR, AIR	1
14	206010	VALVE, RELIEF	1
15	210695	FITTING, BARB	1
16	210926	FITTING, TUBE	2
17	208646	O-RING, .426 ID	1
18	SP208265	FILTER, AIR	1
19	370159	RETAINER, FILTER	1
20	208304	FITTING, TUBE, ELBOW, MALE	1
21	SP370071	SWITCH, PROXIMITY	2
22	370241	ROD, RETAINER	2
23	370245	BRACKET, SWITCH RETAINING	1
24	212009	FITTING, TEE, SWIVEL, 10-32	1
25	208763	FITTING, EXTENSION, 10-32	1
26	208302	FITTING, BARBED, SWIVEL, ELBOW	2
27	369402	ASSEMBLY, CHECK VALVE. <i>(Refer to Page 2-23 for a list of parts in assembly).</i>	1

**Ink Module/Manifold Assembly, Components Manifold View (Continued)**

Parts List Follows on Page 2-21.



**Figure 2-9 Air Manifold Assembly**

**VIDEOJET® Triumph Series Illustrated Parts Breakdown**

Key No.	Part No.	Description	Quantity
28	SP213144	VALVE, SOLENOID, 24 V.	1
29	212339	SWITCH, PRESSURE, DUAL, 25 LB. TO 60 LB.	1
30	213145	GASKET	1
31	213146	CONVERTER	1
32	208897	FITTING, TUBE, Y	1
33	206728	TUBING, EXTRUDED	1 IN.
34	208302	FITTING, BARBED, SWIVEL, EXBOW	2
35	206728	TUBING, EXTRUDED	1 IN.
36	SP204446	SWITCH, PRESSURE	1
37	204615	TUBING, EXTRUDED, 1/8" ID X 1/4" OD	.17 IN.
38	206728	TUBING, EXTRUDED, .062" ID X .125" OD	7 IN.
39	205987	FITTING, TUBE, BARBED, TEE	1
40	206728	TUBING, EXTRUDED	20 IN.
41	207665	SCREW, M3 X 5 X 20, PAN HEAD, PHILLIPS	2
42	208344	SCREW, M2 X 5 X 16, PHILLIPS HEAD	2
43	209200	SWITCH, ADAPTER, PRESSURE	1
44	211111	SCREW. M1.7 X 13 POZIPAN	8
45	SP390771	VALVE, TM	4



## Ink Module/Manifold Assembly, Components Internal View

Parts List Follows on Page 2-23.

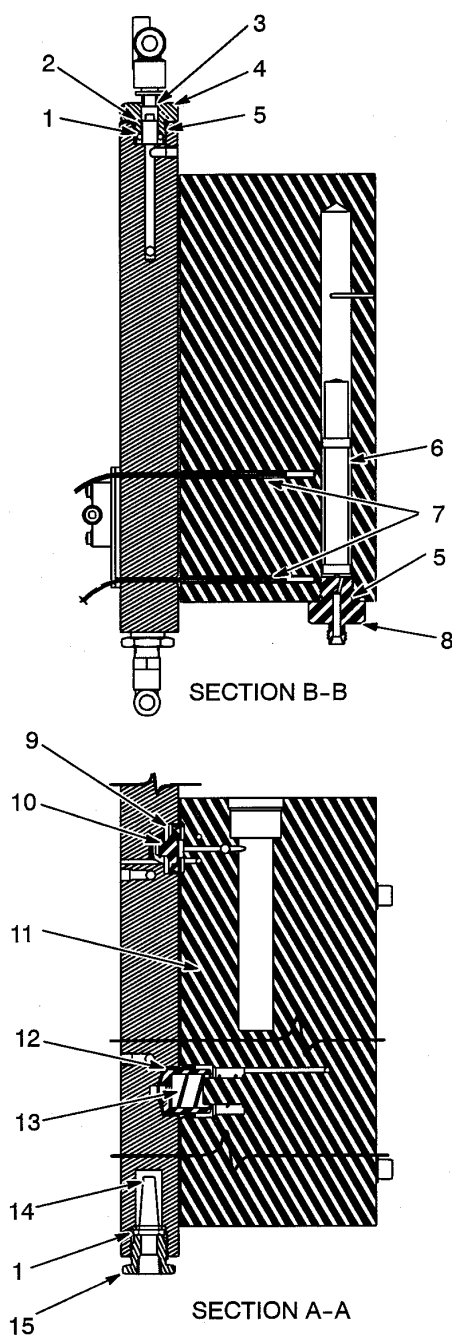


Figure 2-10. Ink Module/Manifold Assembly, Components Internal View

**VIDEOJET® Triumph Series Illustrated Parts Breakdown**

Key No.	Part No.	Description	Quantity
1	208432	O-RING, #108 .237 ID, .103 WALL, EPDM	1
2	SP208264	VALVE, CHECK, CARTRIDGE ¼, 60 PSI	1
3	369402	ASSEMBLY, CHECK VALVE. <i>(Includes items numbered 1, 2, 4,, and 5).</i>	1
4	370158	RETAINER, CHECK VALVE, VACUUM	1
5	208317	O-RING, #906 .468 ID, .078 WALL, EPDM	3
6	SP355034	FLOAT, PRESSURE TANK, PKD, ASSY	1
7	370241	ROD, RETAINER, SWITCH	2
8	370155	CAP, PRESSURE TANK	1
9	355609	PUSHER, ADDER VALVE	2
10	208718	SPRING, COMPRESSION, ½ FL., SST	2
11	370154	DIAPHRAGM, INK SYSTEM	1
12	371011	PISTON, TRANSFER	1
13	213671	SPRING, COMPRESSION, OD 550, ID, .468	1
14	208265	FILTER, AIR, 30 MICRONS	1
15	370159	RETAINER, FILTER	1

## Printhead and Umbilical

Parts List Follows on Page 2-25.

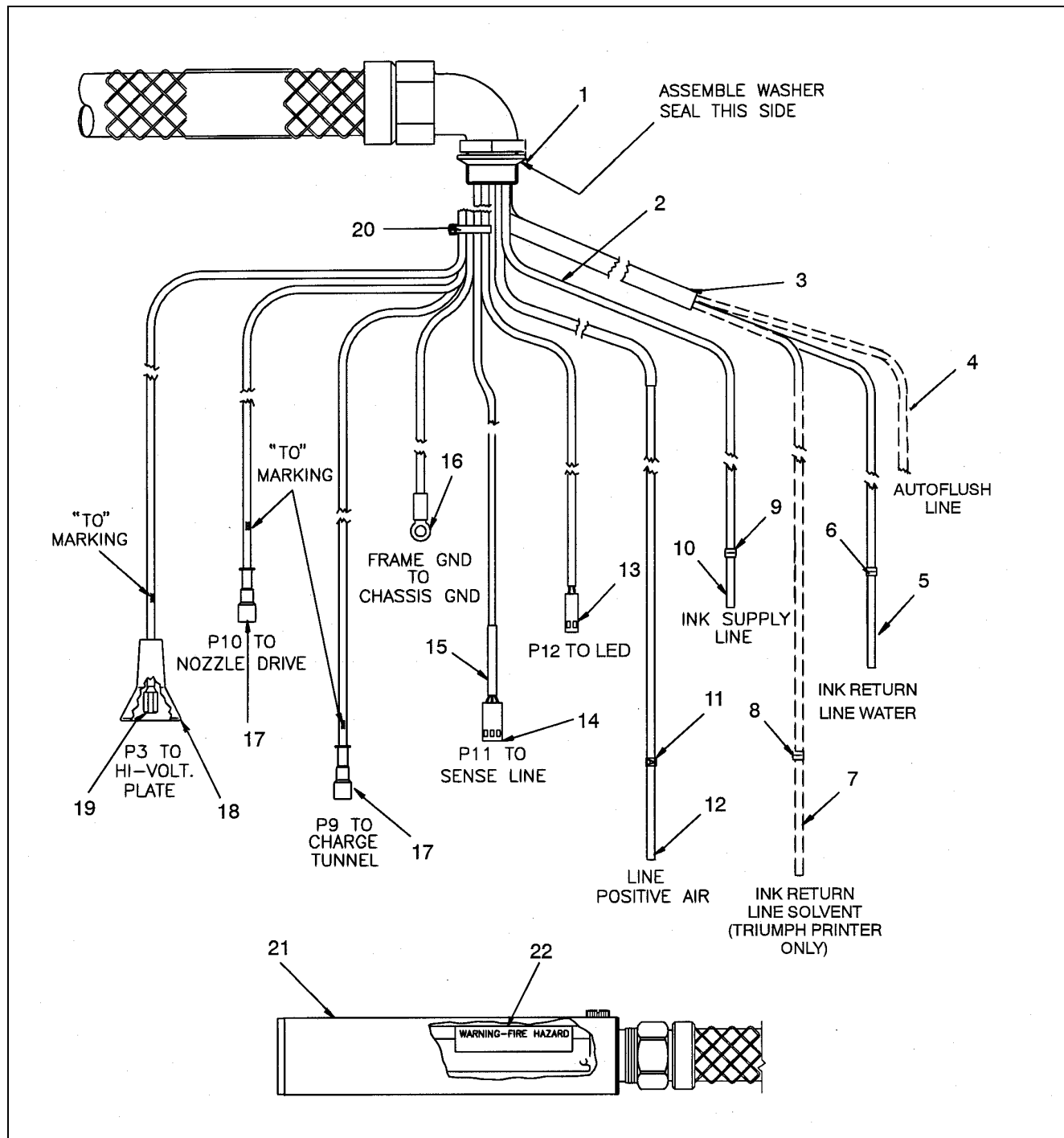


Figure 2-11. Printhead and Umbilical

**VIDEOJET® Triumph Series Illustrated Parts Breakdown**

Key No.	Part No.	Description	Quantity
	SP374713	PRINthead & UMBILICAL ASSY, <i>TRIUMPH &amp; OPAQUE</i>	1
	SP374711	PRINthead & UMBILICAL ASSY, <i>TRIUMPH WITH AUTOFLUSH</i>	1
	SP374431	PRINthead & UMBILICAL ASSY, <i>TRIUMPH T120</i>	1
	*REF 374712	(Triumph and Opaque Only) CABLE & DUCT ASSEMBLY	1
	*REF 374436	(Triumph T120 Only) CABLE & DUCT ASSEMBLY	1
1	203668	GASKET, 0.5 ID	1
2	210815	TUBING, EXTRUDED, .14 I.D., 3/16 OD	26.0 IN.
3	207238	TUBING, NYLON, 1/4 ID, RETURN LINE SLEEVE	12.5 FT.
4	203339	AUTOFLUSH LINE, DEDICATED	1
5	251413	(Triumph and Opaque Only) TUBING, COBOTHANE, 0.063 ID/0.125 OD (WATER)	16.93 FT.
5	206215	(Triumph T120 Only) TUBING, TEFLON	17.0 FT.
6	205396	MARKER, 'V', CLIP-ON TYPE, 1/8 OD	1
7	206214	(Triumph and Opaque Only) TUBING, TEFLON, .053 ID X .016 W SOLVENT)	25.0 FT.
8	207240	(Triumph and Opaque Only) MARKER, 'B', CLIP-ON TYPE, 3/32 OD	1
9	203748	MARKER, 'T', CLIP-ON TYPE, 1/8 OD	1
10	202549	TUBING, TEFLON, .062 ID X .030 W (INK LINE)	15.67 FT.
11	203747	MARKER, 'A', CLIP-ON TYPE, 1/8 OD	1
12	203339	TUBING, POLYALLOMER, 1/8 OD	16.5 FT.
13	206267	CONNECTOR, 2 CRCT ON .100 CNTR, 28AWG	1
14	206090	HOUSING, CONNECTOR, 3 CRCT ON .100 CN	1
15	201027	TUBING, SHRINK, .187 ID (4.6")	0.38 FT.
16	209207	TERMINAL, RING TONGUE - #8 STUD	1
17	205996	CONNECTOR, COAX, PLUG, QUICK CNCT (Requires RG/U 179 crimp tool)	2
18	370216	CAP, H.V. CONNECTOR, TRIUMPH	1
19	343242	LUG, TERMINAL, H.V.	1
20	250077	TIE, CABLE, NYLON, 7/64 X 3-7/8	1
21	375055	(Triumph and Opaque Only) COVER, 1-3 LINE PH, WASH-DN, PRINthead	1
21	374440	(Triumph T120 Only) COVER, PRINthead	1
22	370099-XX	LABEL, WARNING, FIRE HAZARD <i>Refer to part number language suffixes on pages 1-6 and 1-7.</i>	1

# Umbilical, Printhead End

Parts List Follows on Page 2-27.

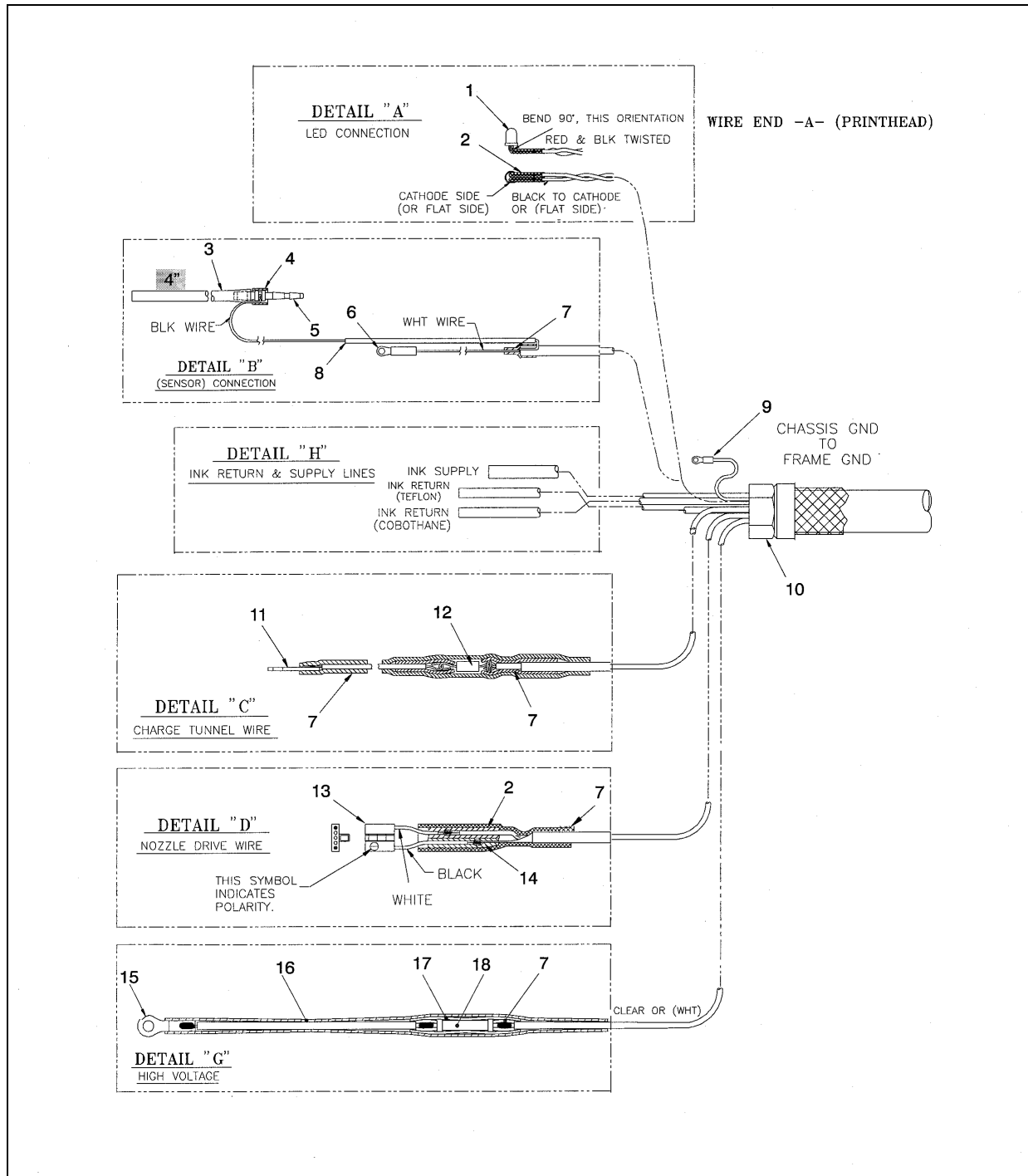


Figure 2-12. Umbilical, Printhead End

**VIDEOJET® Triumph Series Illustrated Parts Breakdown**

Key No.	Part No.	Description	Quantity
1	203592	L.E.D., RED, SOLID STATE, T1 PKG.	1
2	205509	TUBING, SHRINK, .063 ID, BLACK	.5 FT.
3	251413	TUBING, PLASTIC, 1/8 OD	.3 FT.
4	201027	TUBING, SHRINK, .187 ID	.2 FT.
5	356704	FITTING, BARB, RETURN LINE	1
6	206217	TERMINAL, RING, #2, 26-22 AWG	1
7	206174	TUBING, SHRINK, .125 ID BLACK	.8 FT.
8	206927	TUBING, SHRINK, .047 ID, BLACK	.3 FT.
9	206220	TERMINAL, RING, #4, 26-22 AWG	1
10	212416	FITTING, CONNECTOR, STRAIGHT, LQUD	2
11	343244	TERMINAL, LUG	1
12	200419	RESISTOR, FCF, 10K OHM 1/4W 5%	1
13	374532	CONNECTOR, (2) PIN MALE W/ LATCH	1
14	250522	TUBING, SHRINK, .093 ID	.1 FT.
15	343242	LUG, TERMINAL	1
16	206173	TUBING, SHRINK, .187 ID, BLACK	1.4 FT.
17	205257	TUBING, TEFLON, .144 ID X .020W	.2 FT.
18	204864	RESISTOR, FMA, 10M OHM 1.5W, 5%	1

# Printhead

Parts List Follows on Page 2-29.

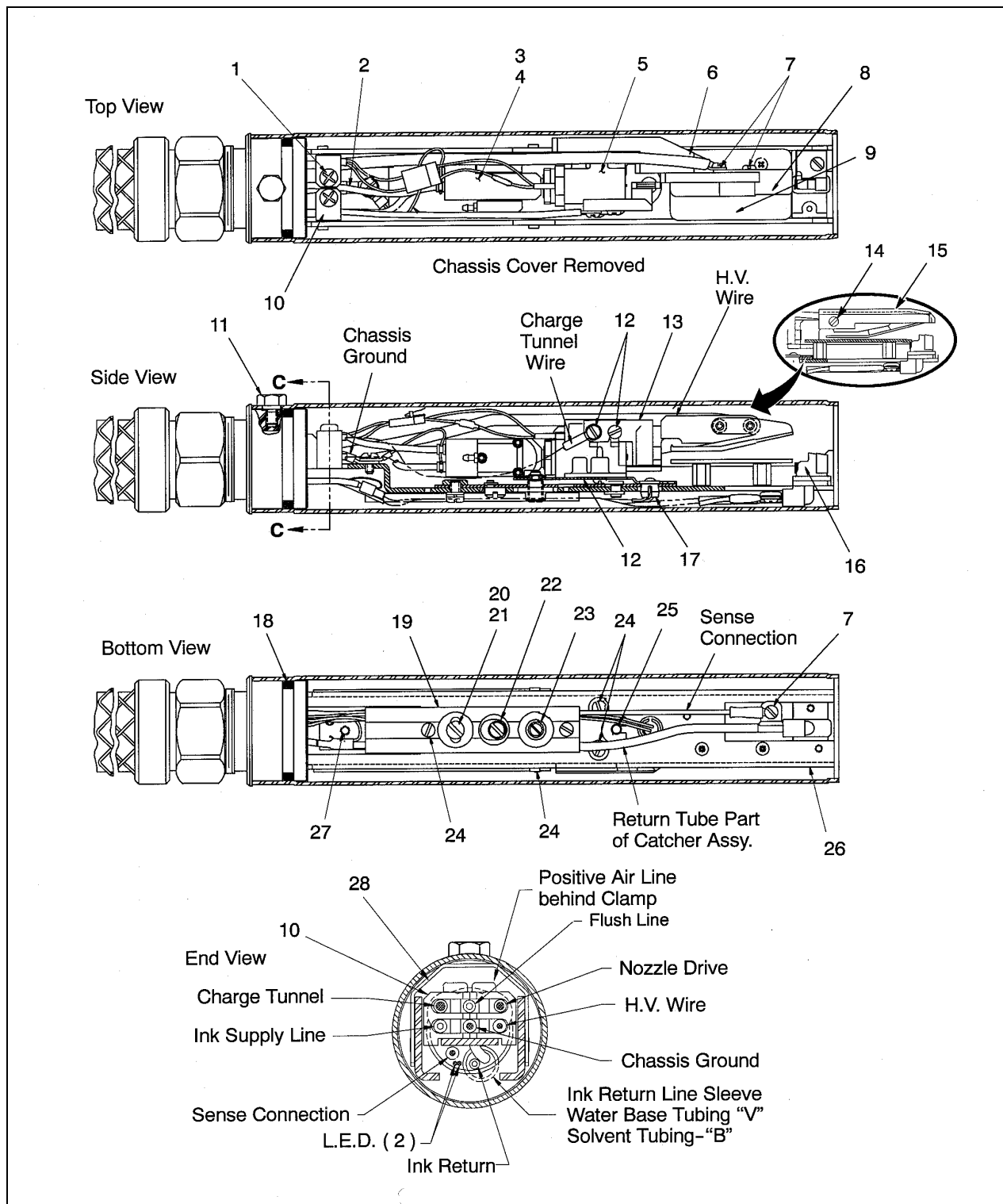


Figure 2-13. Printhead

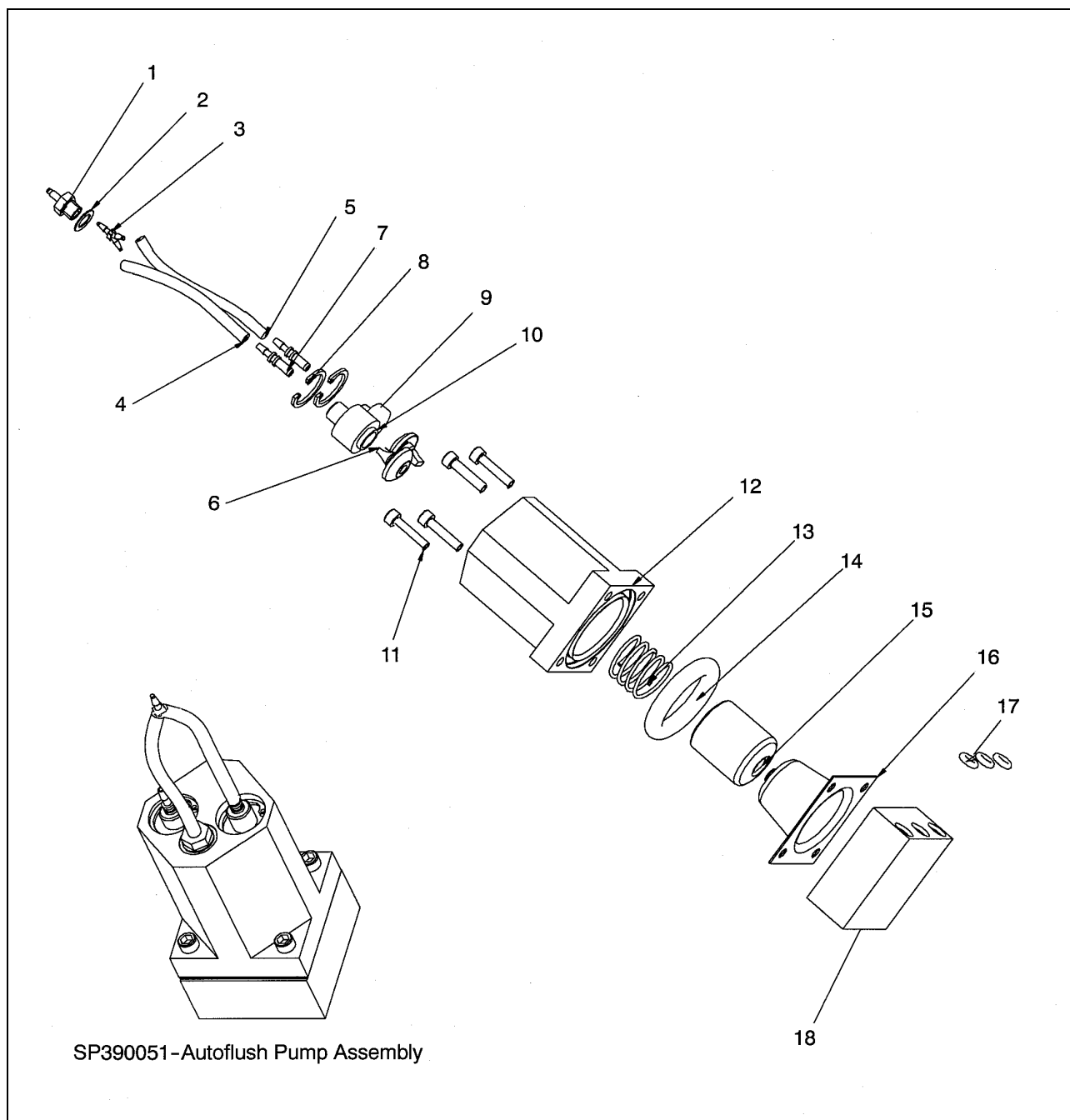
**VIDEOJET® Triumph Series Illustrated Parts Breakdown**

Key No.	Part No.	Description	Quantity
1	205827	SCREW, MACH, PNHD, PHLP, 4-40 X ½, LG	2
2	202770	SCREW, MACH, PNHD, SLTD, 4-40 X 1/8, LG	1
3	SP355636	(Triumph and Opaque Only) VALVE, INK, NON AF	u
3	SP371019	(Triumph and Opaque Only) VALVE, INK, AF	1
3	370180	(Triumph T120 Only) VALVE, INK, NON AF	1
4	206582	O-RING, .042 ID	1
5	SP370214	(Triumph and Opaque Only) NOZZLE, 66µ, ASSY	1
5	SP374435	(Triumph T120 Only) NOZZLE, 120µ, ASSY	1
6	355199	(Triumph and Opaque Only) ARM, H.V., 1-3 LINES	1
6	374456	(Triumph T120 Only) ARM, H.V.	1
7	201397	SCREW, MACH, PNHD, SLTD, 2-56 X 3/16	2
8	356726	(Triumph and Opaque Only) PLATE, H.V., 1-3 LINES	1
8	356726	(Triumph T120 Only) PLATE, H.V.	1
9	356267	(Triumph and Opaque Only) PLATE, GROUND, 1-3 LINES	1
9	356267	(Triumph T120 Only) PLATE, GROUND	1
10	355195	CLAMP, UPPER	2
11	370068	SCREW, M3 X 8MM	1
12	203755	SCREW, MACH, RND HD, 2-56 X 1/16, L	4
13	355193	(Triumph and Opaque Only) TUNNEL, CHARGE, SST	1
13	374438	(Triumph T120 Only) TUNNEL, CHARGE	1
14	212725	(Triumph T120 Only) SCREW, 2-56 X .375, STAINLESS	1
15	374454	(Triumph T120 Only) INSULATOR, H.V. PLATE	1
16	SP356858	CATCHER, PLASTIC, TRIUMPH, PKD	1
17	355974	CLIP, LED	1
18	209705	O-RING	1
19	355413	RETAINER CLIP	1
20	193499	WASHER, FLAT, 0.125 ID X 0.025	1
21	206313	WASHER, LOCK, SPLIT #4	1
22	355190	ECCENTRIC, HORIZONTAL ADJ.	1
23	355246	SCREW, VERTICAL ADJ.	1
24	206221	RING, RETAINING, PRONG LOCK	1
25	375053	(Triumph and Opaque Only) PRINTHEAD DECK	1
26	374432	(Triumph T120 Only) PRINTHEAD DECK	1
27	201180	SCREW, MACH, PNHD, SLTD, 4-40 X 3/8, LG	1
28	355201	COVER, CHASSIS	1



**Autoflush Assembly (SP390051) (Triumph Printer Only)**

Parts List Follows on Page 2-31.



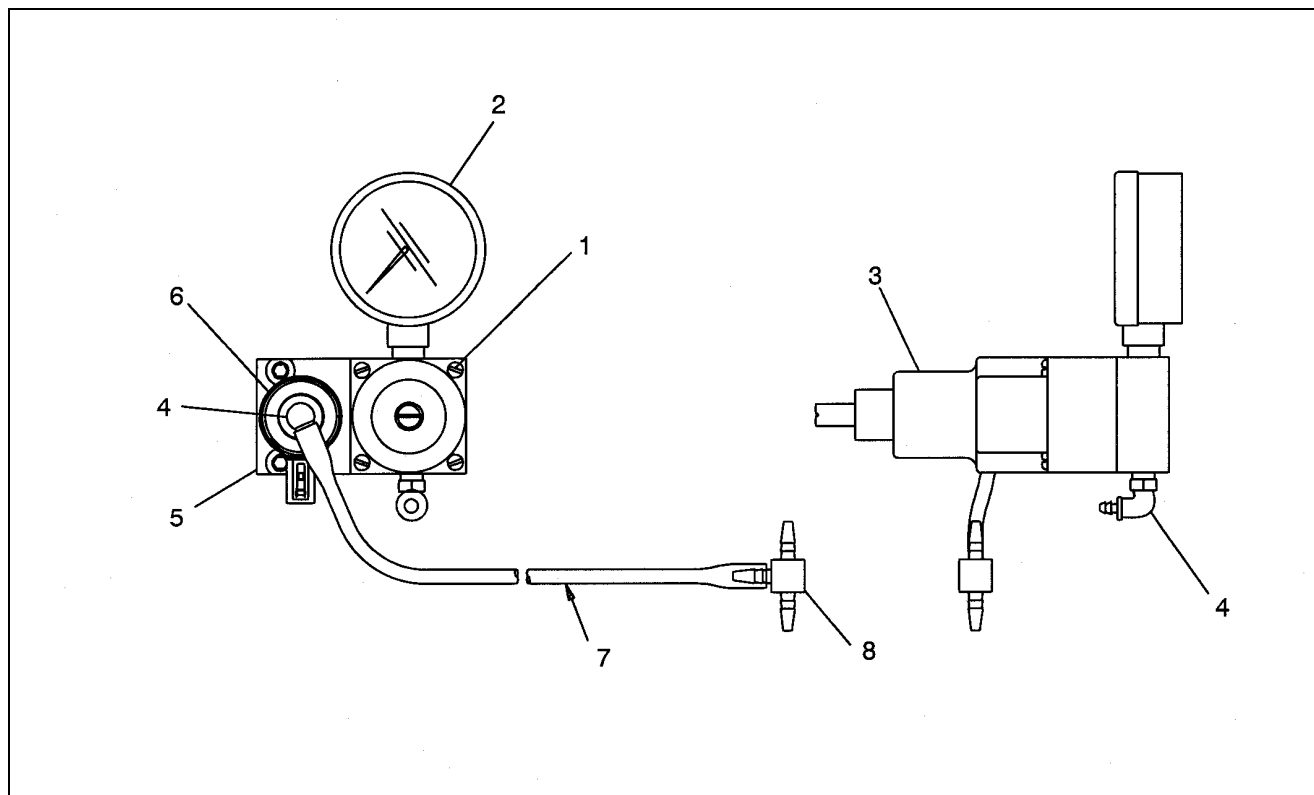
**Figure 2-14. Autoflush Pump Assembly (SP390051) (Triumph Printer Only)**

**VIDEOJET® Triumph Series Illustrated Parts Breakdown**

Key No.	Part No.	Description	Quantity
	SP390051	AUTOFLUSH ASSEMBLY, TRIUMPH	1
1	209031	FITTING, RESTRICTOR, 66µ	1
2	201872	GASKET, 3/16 ID	1
3	208897	FITTING, TUBE, Y, 1/16 ID	1
4	251413-1	TUBING, PLASTIC, 1/8 OD	1
5	251413-2	TUBING, PLASTIC, 1/8 OD	1
6	207407	VALVE, CHECK, DUCKBILL	2
7	355922	BARB, PRESS-IN, #14	2
8	210707	RING, INTERNAL, RETAINING, ½	2
9	371767	PLUG, BOTTOM	1
10	371766	PLUG, TOP	1
11	014310	SCREW, CAP, HEX SOCKET, 4-40 X ½, LG	4
12	371768	BODY, PUMP, AF	1
13	371003	SPRING, COMPRESSION	1
14	207883	O-RING, .987 ID, EPDM	1
15	371011	PISTON	1
16	371002	DIAPHRAGM, ROLLING	1
17	202097	O-RING, .114 ID	3
18	371010	CAP, DOMED	1

**Autoflush Assembly (SP390051) (Triumph Printer Only) (Continued)**

*Parts List Follows on Page 2-33.*



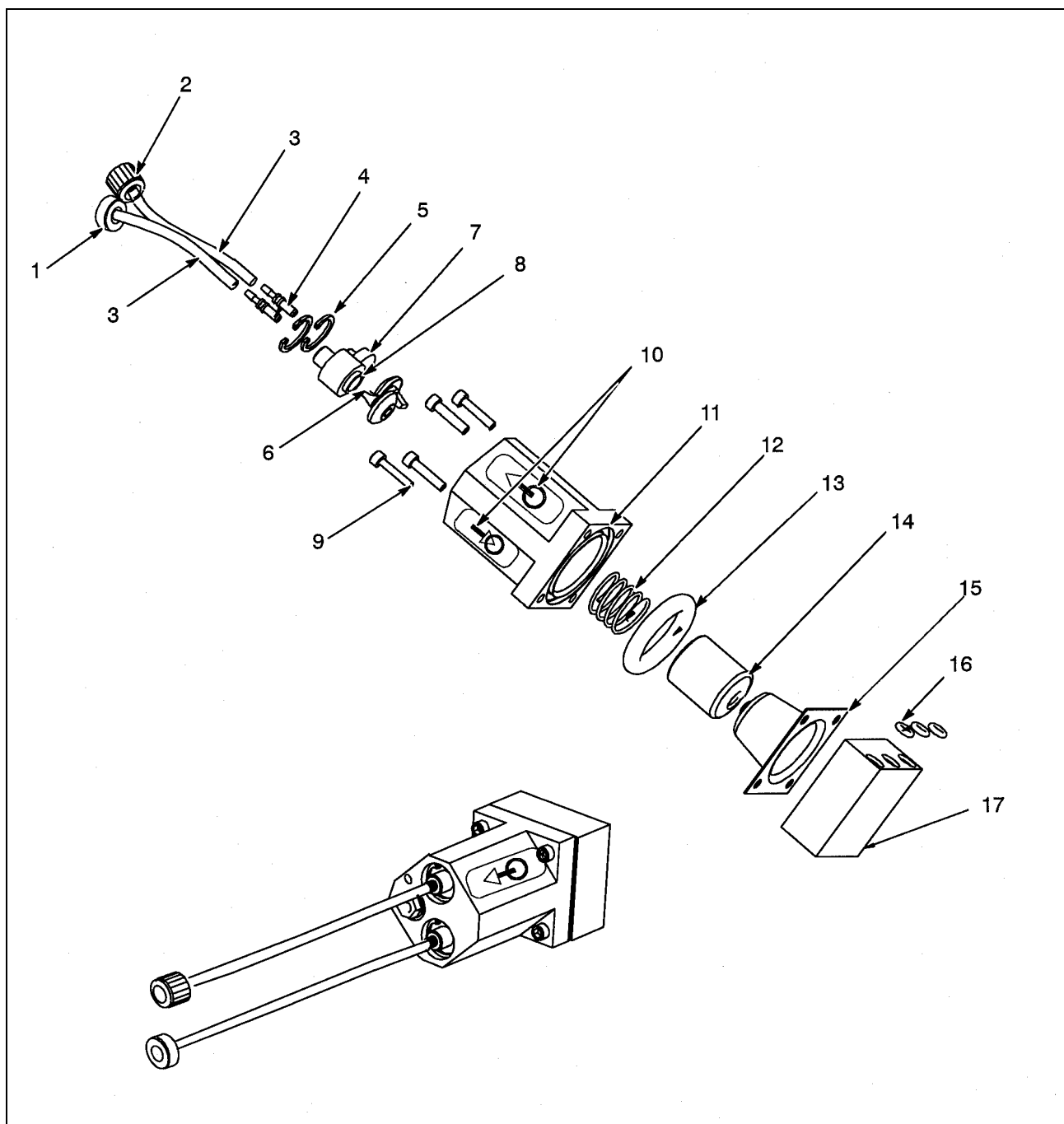
**Figure 2-15. Autoflush Manifold (Triumph Printer Only)**

**VIDEOJET® Triumph Series Illustrated Parts Breakdown**

Key No.	Part No.	Description	Quantity
1	208345	SCREW, M2 X .5 X 30 PHILLIPS	4
2	209151	AUTOFLUSH PUMP PRESSURE GAUGE	1
3	208266	AUTOFLUSH PUMP PRESSURE REGULATOR	1
4	208302	SWIVAL, BARB FITTING	1
5	374719	BLOCK, MOUNTING, AUTOFLUSH	1
6	208295	VALVE, SOLENOID	1
7	206728	TUBING, .062 X .125 OD	1.25 FT.
8	205987	FITTING, BARBED 1/16 ID "T"	1

### Ink Circulator Pump Assembly (SP374804) (*Triumph Opaque Only*)

*Parts List Follows on Page 2-35.*



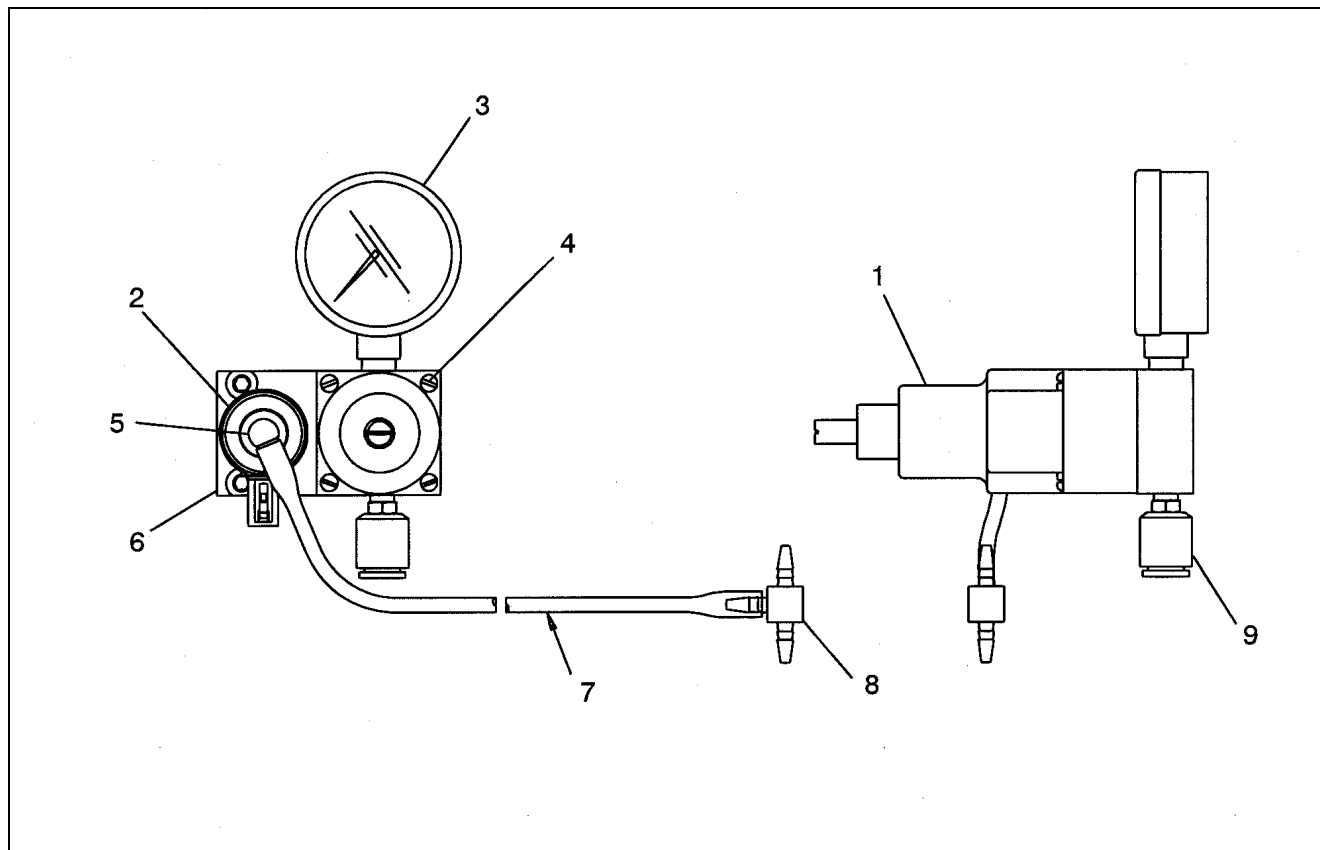
**Figure 2-16. Ink Circulator Pump Assembly (SP374804) (Triumph Opaque Only)**

**VIDEOJET® Triumph Series Illustrated Parts Breakdown**

Key No.	Part No.	Description	Quantity
	SP374804	CIRCULATOR PUMP ASSEMBLY, TRIUMPH OPAQUE	1
1	212816	FITTING, TUBE, QUICK DISC., 1/16 ID	1
2	212815	FITTING, BAR, QUICK DISC, .06 ID TUBE	1
3	206214	TUBING, PLASTIC, .06 ID	6.0 IN.
4	355922	BARB, PRESS-IN, #14	2
5	210707	RING, INTERNAL, RETAINING, ½	2
6	207407	VALVE, CHECK, DUCKBILL	2
7	371767	PLUG, BOTTOM	1
8	371766	PLUG, TOP	1
9	014310	SCREW, CAP, HEX SOCKET, 4-40 X ½, LG	4
10	374815	LABEL, INPUT& OUTPUT	2
11	371768	BODY, PUMP, CIRCULATOR	1
12	371003	SPRING, COMPRESSION	1
13	207883	O-RING, .114 ID	3
14	371011	PISTON	1
15	371002	DIAPHRAGM ROLLING	1
16	202097	O-RING, .114 ID	3
17	371010	CAP, DOMED	1

**Ink Circulator Pump Assembly (SP374804) (Triumph Opaque Only)  
(Continued)**

*Parts List Follows on Page 2-37.*



**Figure 2-17. Ink Circulator Pump Assembly (SP374804) (Triumph Opaque Only) (continued)**

**VIDEOJET® Triumph Series Illustrated Parts Breakdown**

Key No.	Part No.	Description	Quantity
1	208266	CIRCULATOR PUMP PRESSURE REGULATOR	1
2	208295	SOLENOID VALVE	1
3	209151	CIRCULATOR PUMP PRESSURE GAUGE	1
4	208345	SCREW, M2 X .5 X 30 PHILLIPS	4
5	208302	SWIVEL, BARB FITTING	1
6	374719	BLOCK, MOUNTING	1
7	206728	TUBING, .062 X .125 OD	1.25 FT.
8	205987	FITTING, BARBED 1/16 ID "T"	1
9	208302	FITTING, BARBED SWIVAL	1





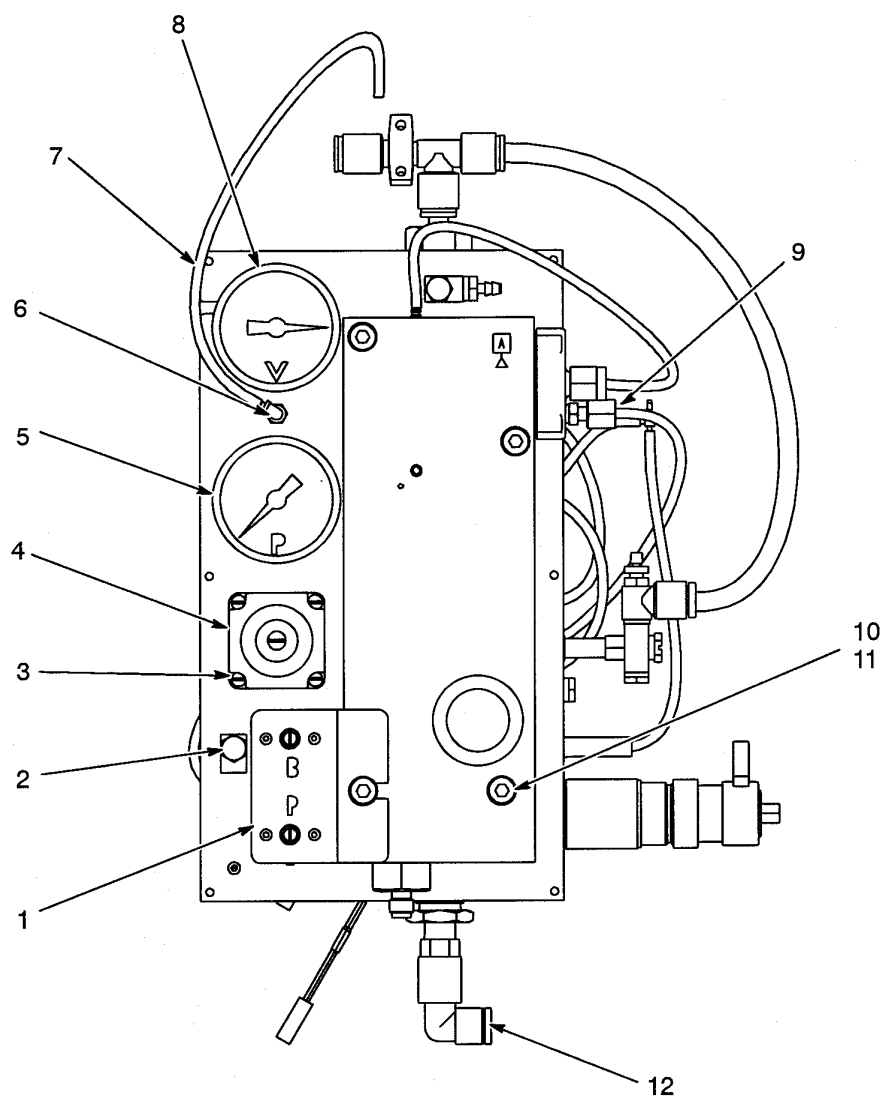
**VIDEOJET® Triumph Series Illustrated Parts Breakdown**

Key No.	Part No.	Description	Quantity
1	SP370185	CAP & STEM ASSEM, W/SPACER	1
2	370550	FILTER, INK	1
3	203324	FITTING, TUBE, NUT, 1/8 TUBE	1
4	203323	FITTING, TUBE, FERRULE, BACK, 1/8 TUBE	1
5	203322	FITTING, TUBE, FERRULE FRONT, 1/8 TUBE	1
6a	207407	VALVE, COMBINATION, 470 X .460 DIA.	1
6b	210847	RETAINER, WIRE	1
6c	369371	SPACER, CHECK VALVE	1
7	370016	LINE, TRANSFER	1

**NOTE:** *If you would like to purchase an entire Ink Module Assembly, Air Manifold Assembly or Ink Module/Air Manifold assembly, you should order the newer style assemblies. Refer to Page 2-13.*

**Ink Module Components (Older Triumph and T120 Printers Only)**

Parts List Follows on Page 2-41



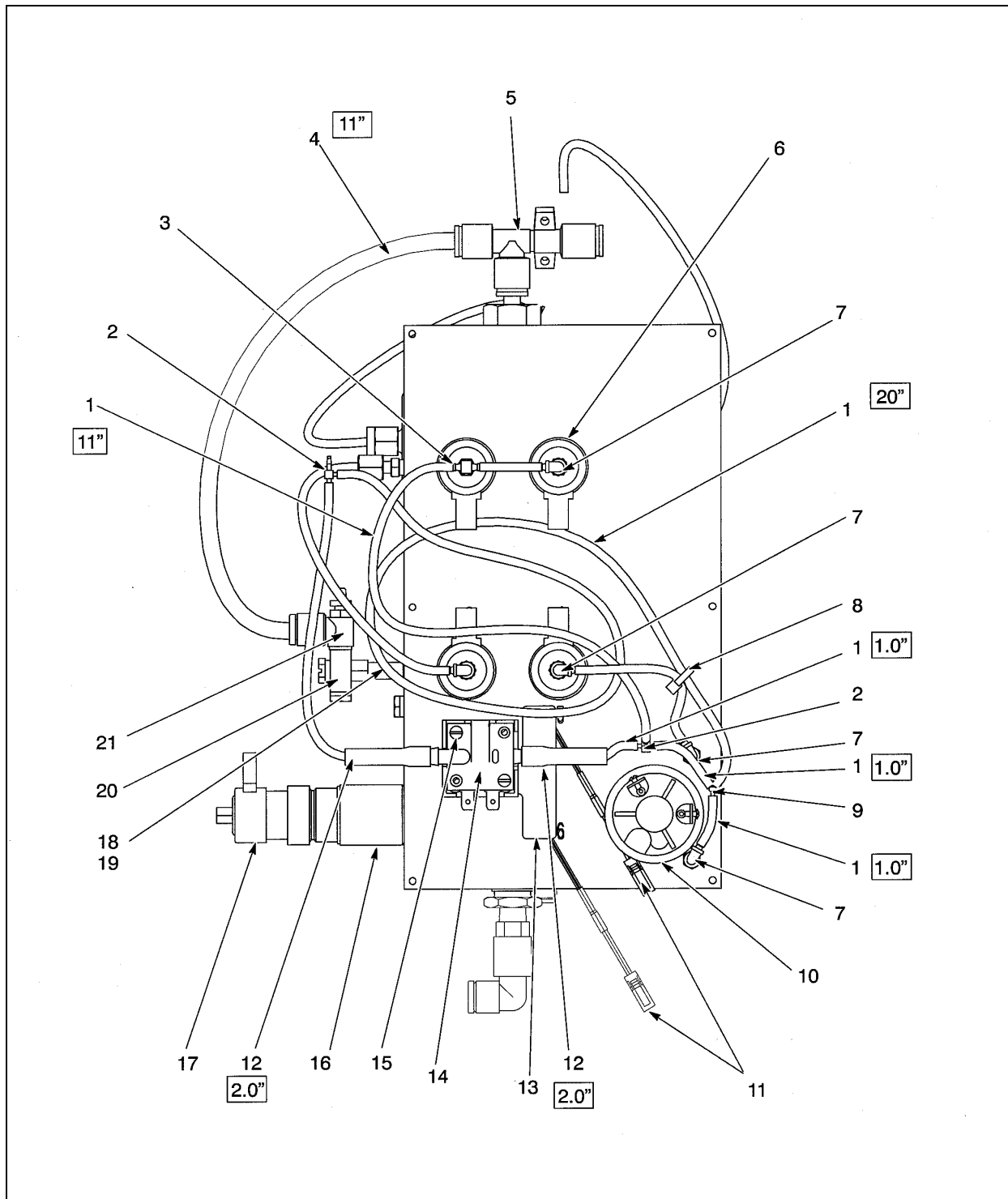
**Figure 2-19. Ink Module Components (Older Triumph and T120 Printers Only)**

**VIDEOJET® Triumph Series Illustrated Parts Breakdown**

Key No.	Part No.	Description	Quantity
1	SP390021	BRACKET, ASSY, NEEDLE VAVLE	1
2	210926	FITTING, TUBE ADJ., "L"	1
3	208345	SCREW, PHILLIPS, M2.5 X 30	4
4	SP208266	REGULATOR, AIR, 0-100 PSI	1
5	SP208270	GAUGE, PRESSURE, 0-60 PSI, 1/8 BACK MT.	1
6	208302	FITTING, BARBED, SWIVEL, ELBOW	1
7	206728	TUBING, EXTRUDED, .62 IDD X .125	4
8	SP208271	GAUGE, VACUUM, 0-30 IN HG, BACK MT.	1
9	204476	FITTING, CONNECTOR, TUBING, 10-32, 1/8 TB	1
10	208323	SCREW, M5 X 90mm, SOCKET, STEEL	4
11	208343	WASHER, FLAT, M5, STEEL	3
12	208304	FITTING, TUBE, ELBOW, MALE	1

**Air Manifold Components (Older Triumph Series Printers Only)**

Parts List Follows on Page 2-43



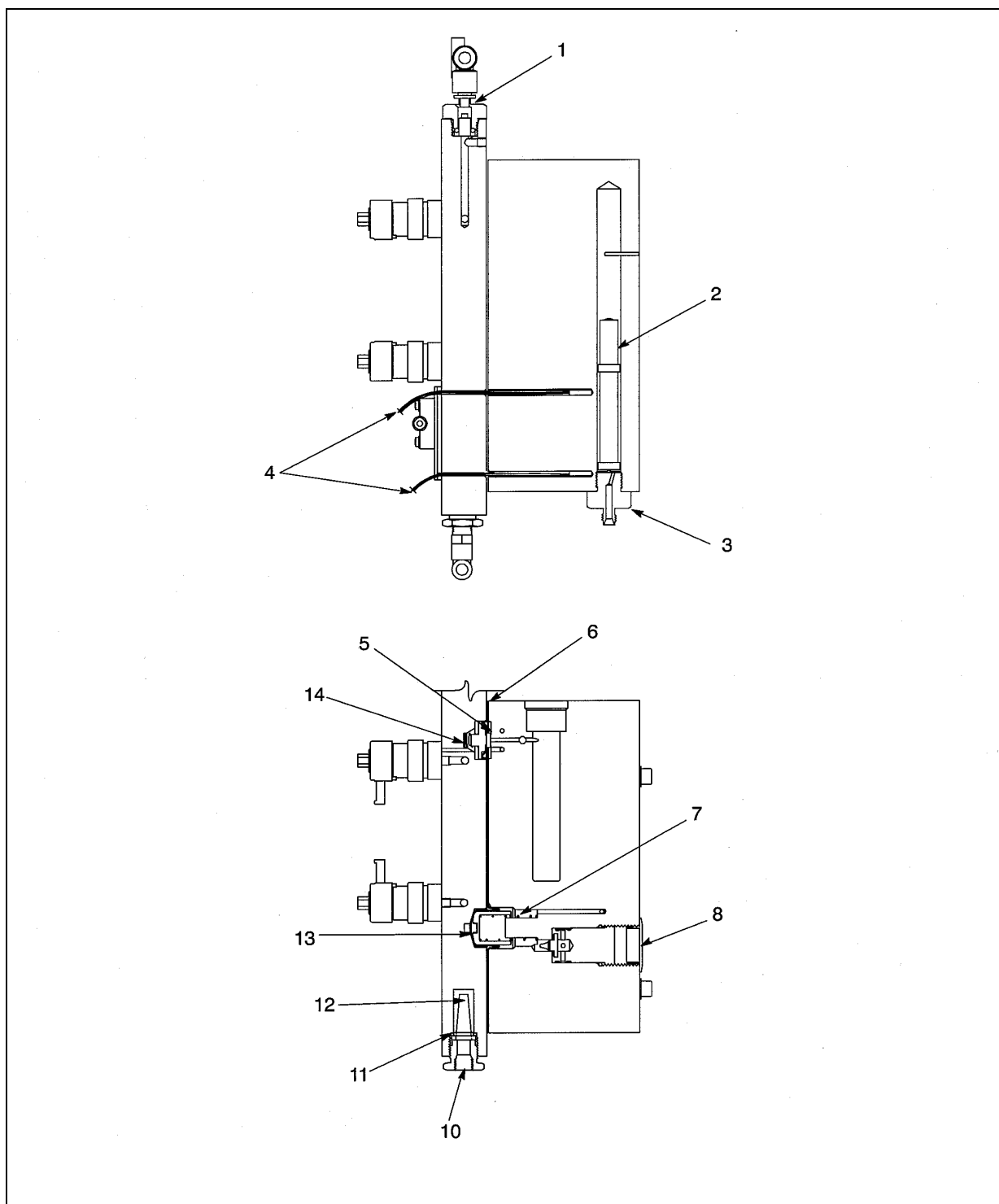
**Figure 2-20. Air Manifold Components (Older Triumph Series Printers Only)**

**VIDEOJET® Triumph Series Illustrated Parts Breakdown**

Key No.	Part No.	Description	Quantity
1	206728	TUBING, EXTRUDED, .062 ID X .125 OD (Refer to Figure 2-18 for tubing lengths)	4
2	205987	FITTING, TUBE, BARBED, 1/16 ID, TEE	2
3	208303	FITTING, BARBED, SWIVEL, TEE	1
4	204498	TUBING, POLY, ¼ OD, BLACK, FLAM RETARD	.92 ft.
5	SP208267	ASPIRATOR, AIR, 26 IN HG MAX	1
6	SP208296	VALVE, SOLENOID, 3-WAY, 24VDC, NC	4
7	208302	FITTING, BARBED, SWIVEL, ELBOW	8
8	250077	TIE, CABLE, NYLON, 7/64 X 3-7/8	23
9	208897	FITTING, TUBE, “Y”, 1/16 ID TUBE	1
10	SP204446	SWITCH, PRESSURE, SPST	1
11	SP370071	SWITCH, PROXIMITY, W/FEMALE CONNECTOR	2
12	204615	TUBING, EXTRUDED, 1/8 ID X 1/4 OD (Refer to Figure 2-18 for tubing lengths)	2
13	370245	BRACKET, SWITCH, RETAINING	1
14	209200	ADAPTER, SWITCH, PRESSURE	1
15	208344	SCREW, M2.5 X 16 PHILLIPS	2
16	208298	BOOSTER, VOLUME, AIR	1
17	SP208295	VALVE, SOLENOID, 3-WAY, 24VDC, NC	1
18	201872	GASKET, 3/16 ID	1
19	208763	FITTING, EXTENSION, 10-32	1
20	212009	FITTING, TEE, SWIVEL, 10-32	1
21	210955	VALVE, NEEDLE, #10-32 TO ¼ TUBE, VACUUM	1

**Ink Module, Internal View (Older Triumph Series Printers Only)**

Parts List Follows on Page 2-45



**Figure 2-21. Ink Module, Internal View (Older Triumph Series Printers Only)**

**VIDEOJET® Triumph Series Illustrated Parts Breakdown**

Key No.	Part No.	Description	Quantity
1	369402	CHECK VALVE HOLDER ASSY	1
1A	SP208264	VALVE, CHECK CARTRIDGE, ¼, 60 PSI	1
1B	208317	O-RING, #906, .468 ID, .078 WALL, EPDM	1
1C	208432	O-RING, #108, .237 ID, .103 WALL, EPDM	1
1D	370158	RETAINER, CHECK VALVE, VACUUM	1
2	SP355034	FLOAT, PRESSURE TANK, PKD, ASSY	1
3	370155	CAP, PRESSURE TANK	1
4	370241	ROD, RETAINER, SWITCH	2
5	355609	PUSHER, ADDER VALVE	2
6	370154	DIAPHRAGM, INK SYSTEM	1
7	371003	SPRING, COMPRESSION, FLUSH PUMP	1
8	20820	PLUG, NON-THREADED, 7/8 IN.	
10	370159	RETAINER, FILTER	1
11	208646	O-RING, .426 ID, BUNA	1
12	208265	FILTER, AIR, 30 MICRON, NYLON	1
13	371011	PISTON, TRANSFER	2
14	208718	SPRING, COMPRESSION, 1/2 FL, SST	2
-	370054	KIT, REBUILD, MODULE, INTERNAL PARTS ONLY	-



### Notes:

[illegible]

# 3

## Accessories and Spare Parts

---

In this chapter you will find:

- a list of the accessories available for use with the **VIDEOJET®** Triumph Series printer
- a list of the items included in the **VIDEOJET®** Triumph Series Spare Parts Kits
- information on supplies available for use with the **VIDEOJET®** Triumph Series printer

Refer to page 3-2 for a chapter-level Table of Contents.

## Chapter 3 Contents

<b>Introduction .....</b>	<b>3-3</b>
Overview .....	3-3
<b>Accessories .....</b>	<b>3-4</b>
Printhead Stands .....	3-4
Printer Stands .....	3-5
Input Air Filter Kit.....	3-6
Air Filter Mount .....	3-6
Input Air Filter Drain Pan.....	3-7
Service Tray .....	3-7
Power Conditioners .....	3-8
Alert Light .....	3-8
Vapor Exhaust Ducting Kit .....	3-9
Shaft Encoder .....	3-9
Portable Air Compressors.....	3-10
Metal Product Detector.....	3-10
Alternate Encoder and Detector Kit.....	3-11
External Make-up Supply System.....	3-11
Product Detectors .....	3-12
Programmable Counter .....	3-13
Air Gun.....	3-13
High Voltage Gap Gauge .....	3-14
Magnifier, Loupe Subassembly .....	3-14
Magnifier Holder Assembly .....	3-15
Trap Bottle Kit.....	3-15
Printhead Hood.....	3-16
Serial Interface Cable .....	3-16
Reduran Hand Cleaner.....	3-16
<b>Spare Parts Kit and Individual Spare Parts (<i>Triumph Printer Only</i>) .....</b>	<b>3-17</b>
Spare Parts Kit.....	3-17
<b>Spare Parts Kit and Individual Spare Parts (<i>Triumph Opaque Printer Only</i>).....</b>	<b>3-19</b>
Spare Parts Kit.....	3-19
<b>Spare Parts Kit and Individual Spare Parts (<i>Triumph T120 Printer Only</i>) .....</b>	<b>3-21</b>
Spare Parts Kit.....	3-21
<b>Supplies .....</b>	<b>3-23</b>

## Introduction

### Overview

**Videojet Technologies Inc.** offers many accessories, parts, and supplies (inks, make-up fluids, and cleaning solutions) for use with the **VIDEOJET®** Triumph Series printer.

This chapter includes only those items that are available for the printer at the time this manual was published. The information in this section is subject to change without notice.

Refer to *Ordering Replacement Parts, Fluids, and Accessories* in Chapter 1, on page 1-8, for information on placing an order with **Videojet Technologies Inc.**

## Accessories

### Printhead Stands

Description	Part Number
Printhead Stand, XL Type	P/N 343879
Printhead Stand, Single Head, 178i, Triumph	P/N 800013

**Regulatory Note:** To maintain regulatory approval, the printhead stand must be bolted to the floor, conveyor, or other stable foundation.

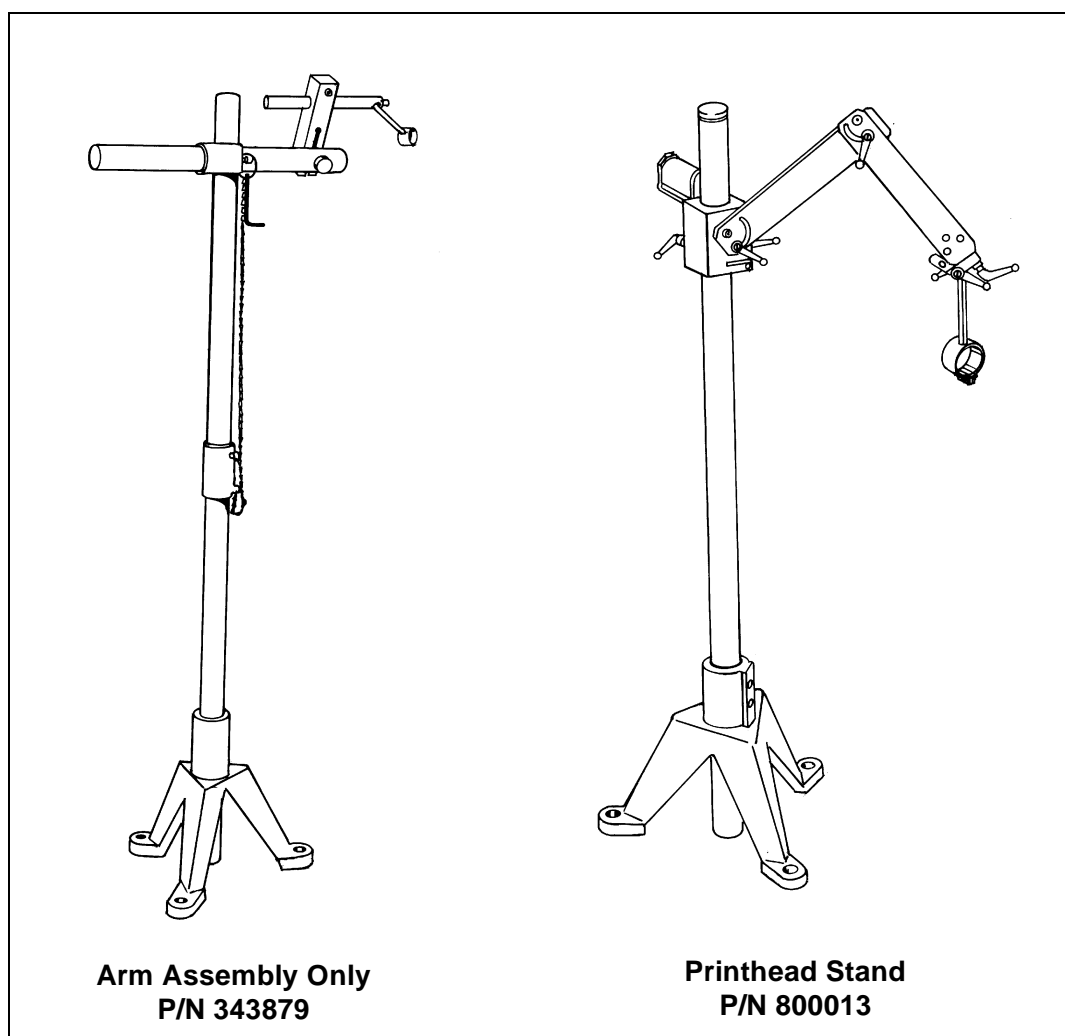


Figure 3-1. Printhead Stand

## Printer Stands

Description	Painted
Mobile Floor Stand, Painted	P/N 391300
Mobile Floor Stand, Stainless Steel	P/N 390128
Floor Stand, Painted	P/N 371155
Table Stand, Painted	P/N 20092400
Wall Mount Brackets, Stainless Steel	P/N 374727

**Regulatory Note:** To maintain regulatory approval for a printer that is to be wall-mounted, the wall mounting set-up and the customer-supplied hardware must be capable of supporting four times the total weight of the printer and the wall mounting structure.

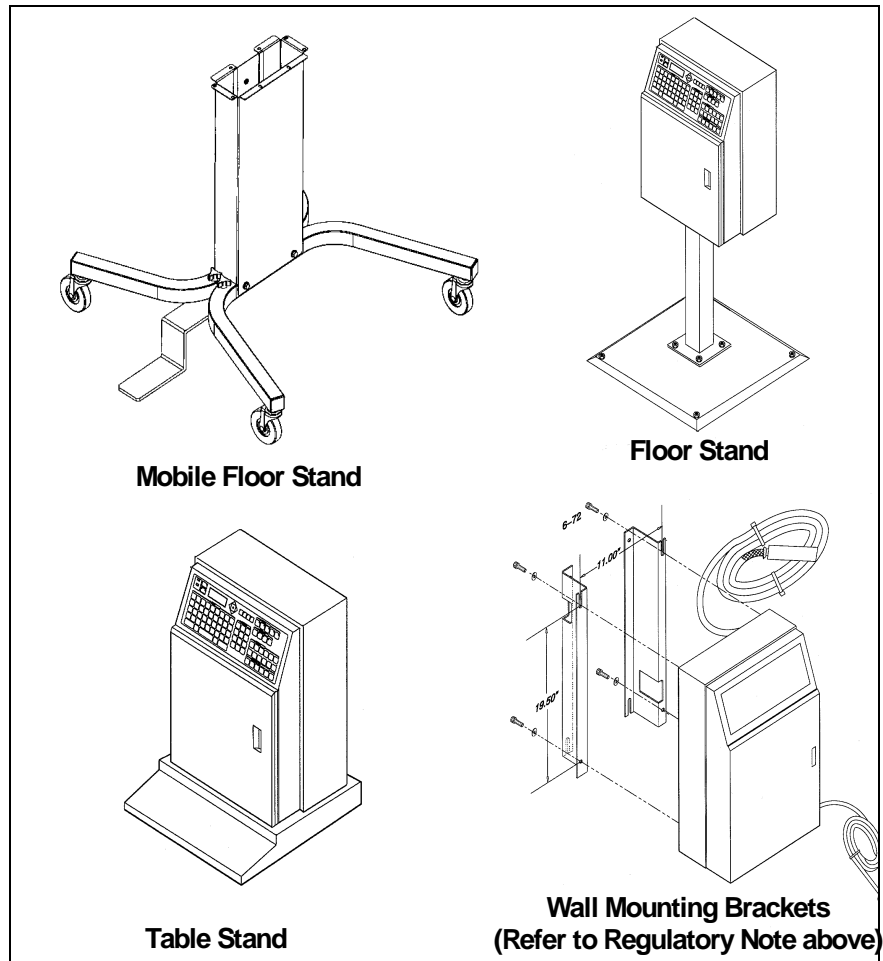
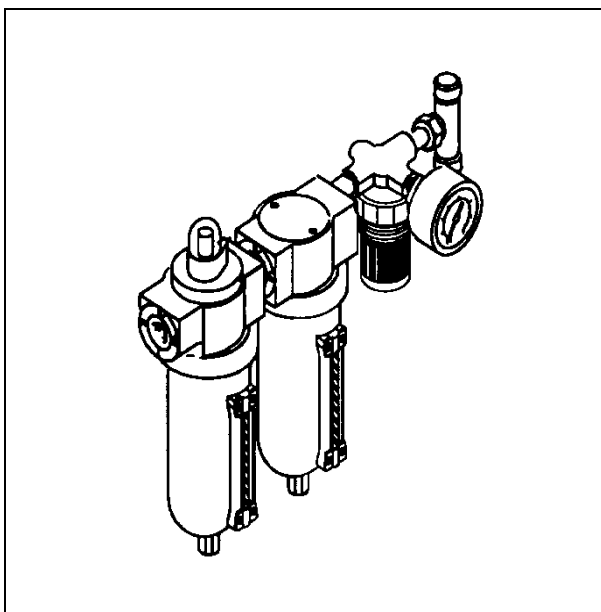


Figure 3-2. Printer Stands

## Input Air Filter Kit

Description	Part Number
Input Air Filter Kit	P/N 370930
Particulate and Coalescing Filter Element Replacement Kit	P/N 212785 <i>See Note Below.</i>



**Figure 3-3. Input Air Filter**

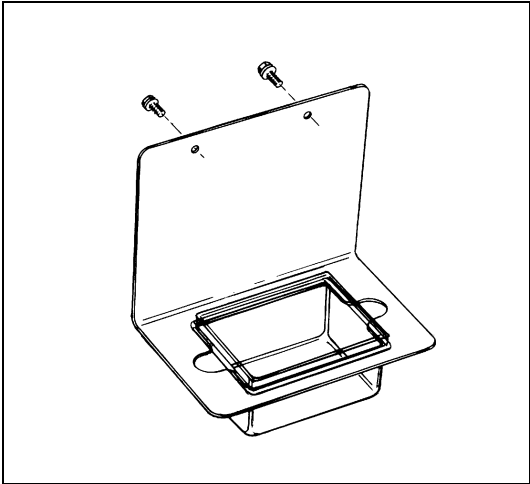
**Note:** If Air Filter Kit was purchased before 10/99 (older kit part number is 370671), order Filter Element Replacement kit P/N 370672.

## Air Filter Mount

Description	Part Number
Air Filter Mount	P/N 374726

**Input Air Filter Drain Pan**

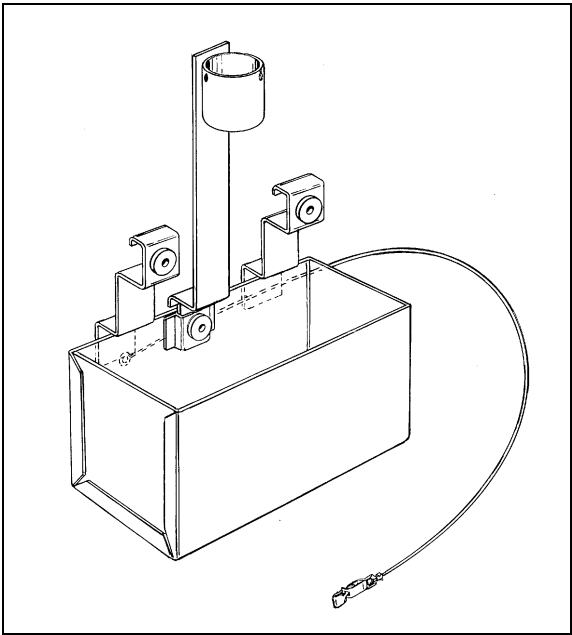
Description	Part Number
Input Air Filter Drain Pan	P/N 370074



**Figure 3-4. Input Air Filter Drain Pan**

**Service Tray**

Description	Part Number
Service Tray	P/N 370045



**Figure 3-5. Service Tray**



## Power Conditioners

Description	Part Number
Power Conditioner, 120 VAC	P/N 356841-02

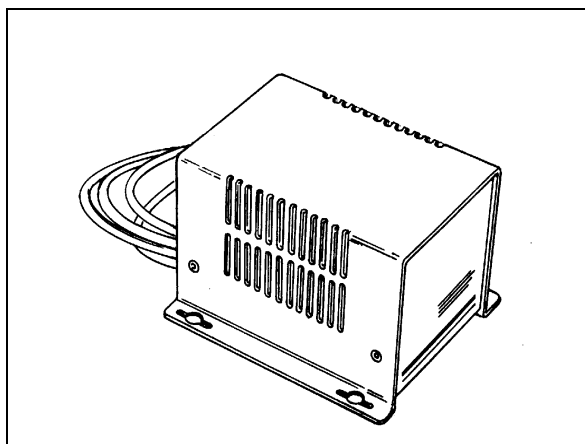


Figure 3-6. Power Conditioner

## Alert Light

Description	Part Number
Alert Light	P/N 374729



Figure 3-7. Alert Light

## Vapor Exhaust Ducting Kit

Description	Part Number
Vapor Exhaust Ducting Kit	P/N 370089

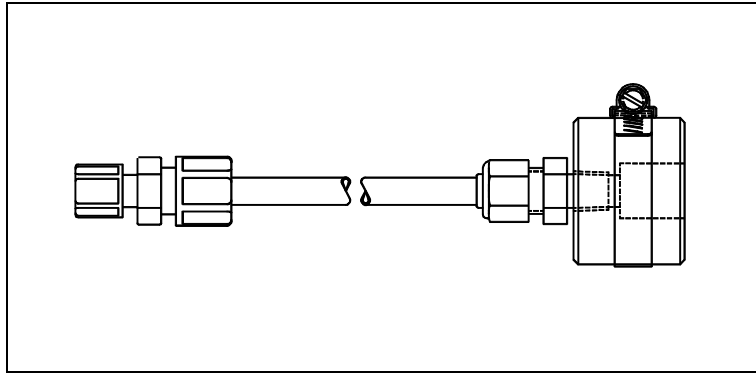


Figure 3-8. Vapor Exhaust Ducting Kit

## Shaft Encoder

Description	Part Number
Universal Shaft Encoder (1800 PPR) and Connector Cable	P/N 370088
Shaft Encoder (1800 PPR) and Connector Cable, environmentally-sealed	P/N 370091

**Regulatory Note for EU Usage:** In order to meet the European Community EMC directive, the Shaft Encoder Input Filter (P/N 374780) must be used with the Shaft Encoder assembly.

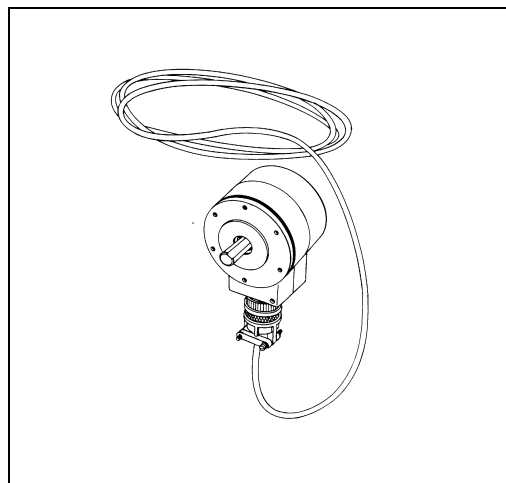


Figure 3-9. Shaft Encoder

## Portable Air Compressors

Air Compressor Specifications	Part Number
120 VAC, 60 Hz	P/N 353072-01
230 VAC, 50 Hz	P/N 353072-02

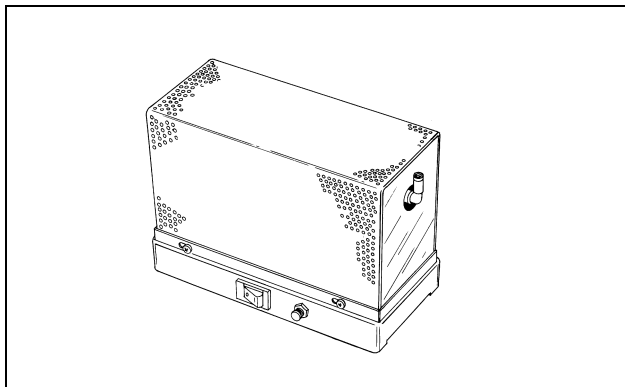


Figure 3-10. Portable Air Compressor

## Metal Product Detector

Description	Part Number
Product Detector (Metal)	P/N 370087

**Regulatory Note for EU Usage:** In order to meet the European Community EMC directive, the Product Detector Input Filter (P/N 374781) must be used with the Metal Product Detector assembly.

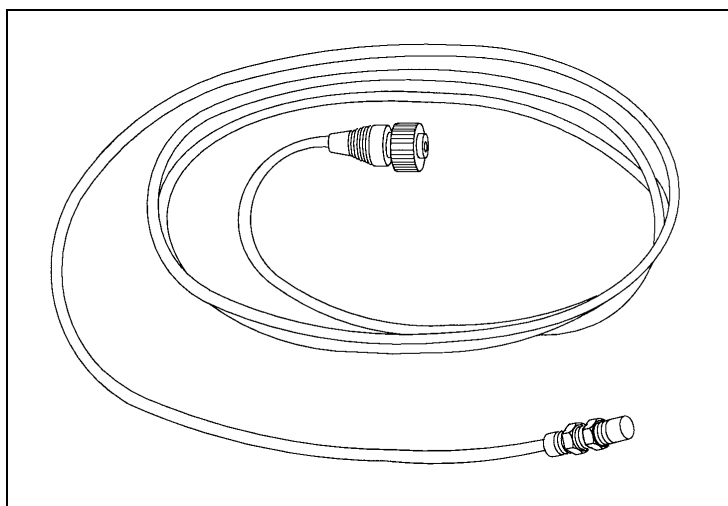


Figure 3-11. Metal Product Detector

## Alternate Encoder and Detector Kit

Description	Part Number
Alternate Encoder and Detector Kit	P/N 370084

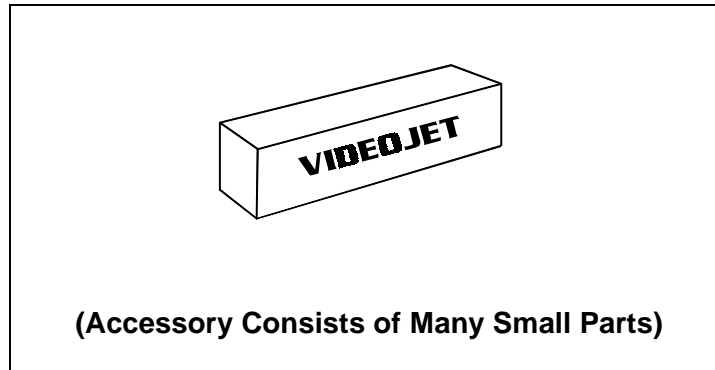


Figure 3-12. Alternate Encoder and Detector Kit

## External Make-up Supply System

Description	Part Number
External Make-up Supply System	P/N 353975-02

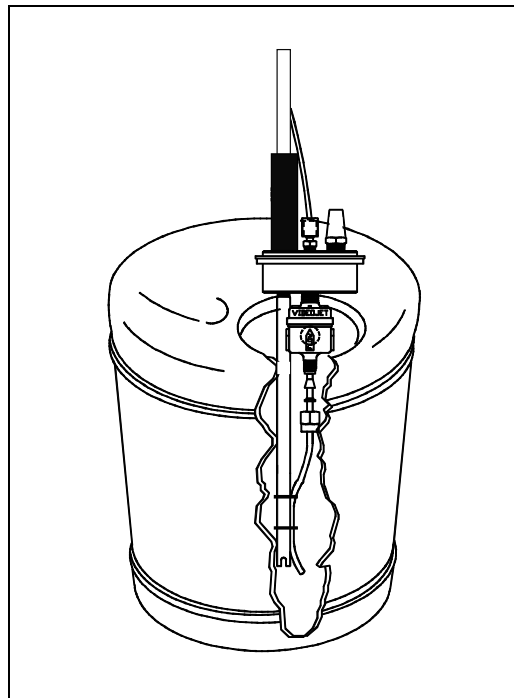
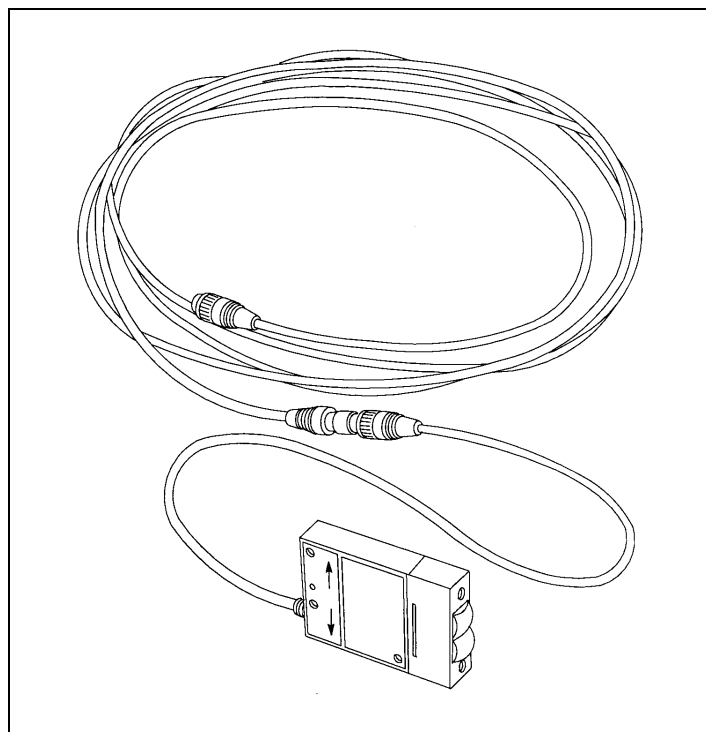


Figure 3-13. External Make-up Supply System

## Product Detectors

Product Detector Type	Part Number
Proximity	P/N 370086-01
Retro-reflective	P/N 370086-02
Fiber Optic, 0.125" (3.17 mm)	P/N 370086-03
Fiber Optic, 0.046" (1.17 mm)	P/N 370086-04
Fiber Optic, 0.125" (3.17 mm), Through-beam	P/N 370086-05
Fiber Optic, Proximity, Registration Mark Sensing	P/N 370086-06
Retro-reflective, Blue Light, Transparent Object	P/N 370086-07

**Regulatory Note for EU Usage:** In order to meet the European community EMC directive, the Product Detector Input Filter (P/N 374781) must be used with the Product Detector assembly.



**Figure 3-14. Product Detector**

Programmable Counter

Description	Part Number
Programmable Counter	P/N 370090

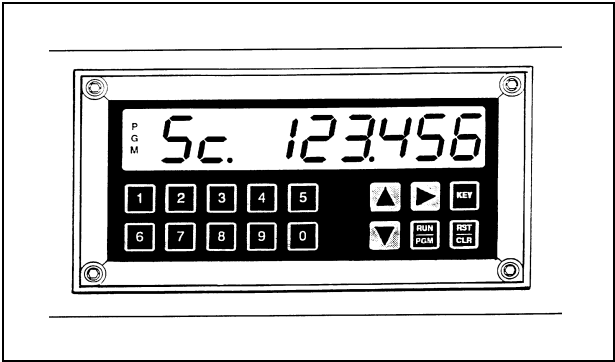


Figure 3-15. Programmable Counter

Air Gun

Description	Part Number
Air Gun	P/N 370177

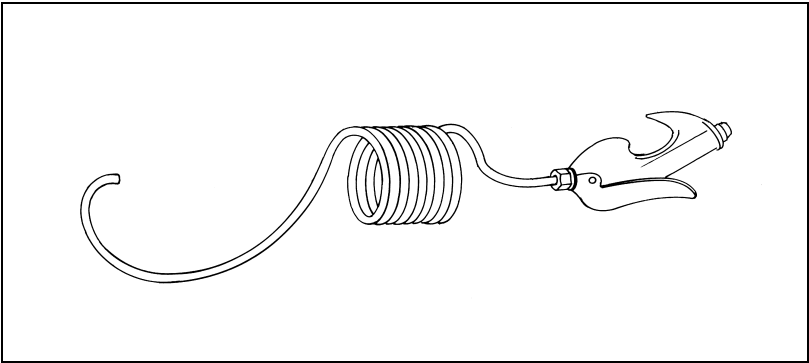


Figure 3-16. Air Gun

## High Voltage Gap Gauge

Description	Part Number
<i>(Triumph and Opaque Only)</i> High Voltage Gap Gauge	P/N 186976
<i>(Triumph T120 Only)</i> High Voltage Gap Gauge	P/N 374441

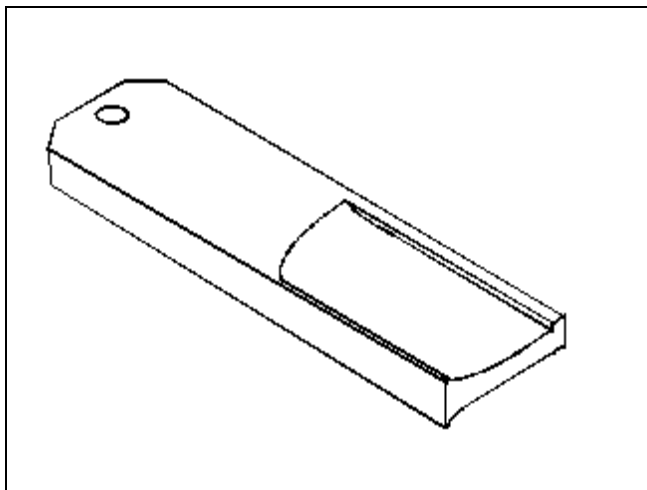


Figure 3-17. High Voltage Gap Gauge

## Magnifier, Loupe Subassembly

Description	Part Number
Magnifier, Loupe Subassembly	P/N 355269

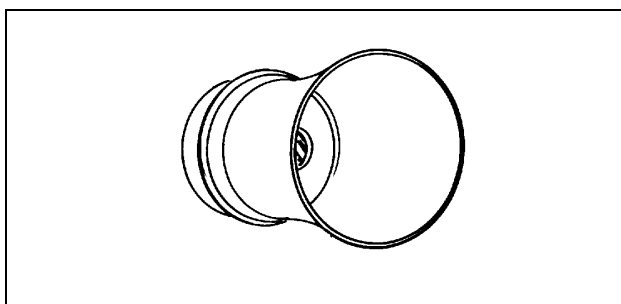
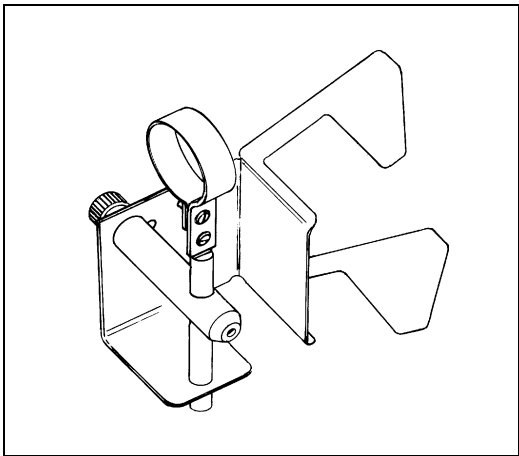


Figure 3-18. Magnifier, Loupe Subassembly

**Magnifier Holder Assembly**

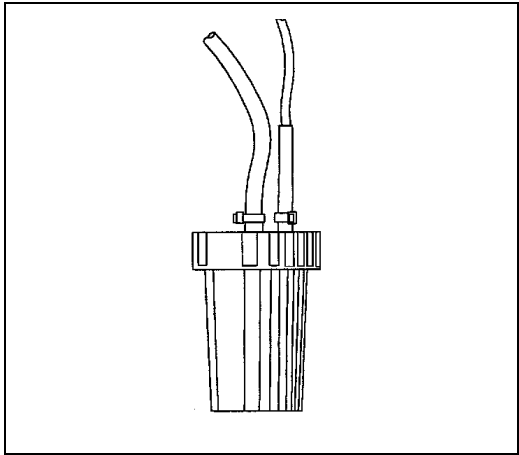
Description	Part Number
Magnifier Holder Assembly	P/N 355257



**Figure 3-19. Magnifier Holder Assembly**

**Trap Bottle Kit**

Description	Part Number
Trap Bottle Kit	P/N 370182



**Figure 3-20. Trap Bottle Kit**



## Printhead Hood

Description	Part Number
<i>(Triumph T120 Only)</i> Printhead Hood	P/N 374459

## Serial Interface Cable

Description	Part Number
DB9F to DB9F, 30 ft. long	P/N 370769

## Reduran Hand Cleaner

Description	Part Number
Reduran Hand Cleaner	P/N SP212321

## Spare Parts Kit and Individual Spare Parts (*Triumph Printer Only*)

### Spare Parts Kit

Spare parts kits, consisting of normal maintenance items for the **VIDEOJET®** Triumph printer, are available through Videojet Technologies Inc.. Individual items in the Spare Parts Kits are also available separately. There are separate kits for the standard and autoflush options:

Standard Spare Parts Kit - P/N 374705

Autoflush Spare Parts Kit - P/N 374704

The **VIDEOJET®** Triumph Spare Parts Kits consist of the following items:

Part Number	Description	Standard P/N 374705	Autoflush P/N 374704
SP356858	CATCHER	1	1
SP371675	NOZZLE	1	1
SP355636	INK VALVE, NON-AUTOFLUSH (STANDARD)	1	--
SP371019	INK VALVE, AUTOFLUSH	--	1
SP213144	VALVE, SOLENOID, 24V	1	1
SP390771	VALVE, TM	2	2
SP204446	DIFFERENTIAL PRESSURE SWITCH (INK LOW)	1	1
SP370551	BOTTLE FILTER	2	2
SP375007-01	INK FILTER	2	2
SP370246	FILTER, VACUUM, W/ O-RING	2	2
186514	HEX KEY, 0.050"	2	2
186976	HV GAP GAUGE	2	2
202047	WASH BOTTLE, 250ML	2	2
203806	TEE FITTING, PIPE, BRANCH, 1/4NPT	1	1
207407	VALVE, COMBINATION, DUCKBILL	4	4
208265	AIR FILTER, 30 MICRON, NYLON	1	1
204498	TUBING, THERMOPLASTIC, 1/4" OD (BLACK)	6 FEET	6 FEET

Part Number	Description	Standard P/N 374705	Autoflush P/N 374704
208302	FITTING, BARBED, SWIVEL, ELBOW	4	4
209451	KEY, KEYBOARD LOCK	2	2
SP212321	REDURAN HAND CLEANER	1	1
343857	HEX KEY, 5/16"	2	2
355193	CHARGE TUNNEL, SST	1	1
355257	MAGNIFIER HOLDER ASSEMBLY	1	1
355269	MAGNIFIER, LOUPE SUBASSEMBLY	1	1
356230	FLOWMETER	1	1
365944-01	SAFETY INSTRUCTIONS, LATEX GLOVES, REDURAN	1	1
370045	CLEANING TRAY	1	1
370068	SCREW, SPECIAL HD, M3 X 8MM	1	1
370125	PRODUCT DETECT, SIMULTATOR ASSEMBLY	1	1
370170	TOOL, RETURN LINE	1	1
91807200	GLOVES, LATEX, BOX	1	1
370154	DIAPHRAM, INK SYSTEM	1	1
208718	SPRING, COMPRESSION, ½", SST	1	1
355609	PUSHER, ADDER VAVLE	1	1
213671	SPRING, COMPRESSION, TRANSFER PUMP	1	1
374809	FITTING, CHECK	1	1
370241	ROD RETAINER	2	2
SP370071	SWITCH, PROXIMITY	1	1

## Spare Parts Kit and Individual Spare Parts (*Triumph Opaque Printer Only*)

### Spare Parts Kit

A spare parts kit, consisting of normal maintenance items for the **VIDEOJET®** Triumph Opaque printer, is available through Videojet Technologies Inc. Individual items in the Spare Parts Kit are also available separately.

Spare Parts Kit - P/N 374806

The **VIDEOJET®** Triumph Opaque Spare Parts Kit consists of the following items:

Part Number	Description	Quantity
SP356858	CATCHER	1
SP371675	NOZZLE	1
SP355636	INK VALVE (STANDARD)	1
SP213149	VALVE, SOLENOID, 24V	1
SP390771	VALVE, TM	2
SP204446	DIFFERENTIAL PRESSURE SWITCH (INK LOW)	1
SP370551	BOTTLE FILTER (MAKE-UP)	1
SP374802	BOTTLE FILTER (INK)	1
SP375007-01	INK FILTER	1
SP370246	FILTER, VACUUM, W/ O-RING	2
186514	HEX KEY, 0.050"	2
186976	HV GAP GAUGE	2
202047	WASH BOTTLE, 250ML	2
203806	TEE FITTING, PIPE, BRANCH, 1/4NPT	1
207407	VALVE, COMBINATION, DUCKBILL	4
208265	AIR FILTER, 30 MICRON, NYLON	1
204498	TUBING, POLYETHYLENE, 1/4" OD (BLACK)	7 FEET
208302	FITTING, BARBED, SWIVEL, ELBOW	4
209451	KEY, KEYBOARD LOCK	2
SP212321	REDURAN HAND CLEANER	1

Part Number	Description	Quantity
343857	HEX KEY, 5/16"	2
355193	CHARGE TUNNEL, SST	1
355257	MAGNIFIER HOLDER ASSEMBLY	1
355269	MAGNIFIER, LOUPE SUBASSEMBLY	1
356230	FLOWMETER	1
365944-01	SAFETY INSTRUCTIONS, LATEX GLOVES, REDURAN	1
370045	CLEANING TRAY	1
370068	SCREW, SPECIAL HD, M3 X 8MM	1
370125	PRODUCT DETECT, SIMULTATOR ASSEMBLY	1
370170	TOOL, RETURN LINE	1
91807200	GLOVES, LATEX, BOX	1
353087	CLEANER, NOZZLE	50
370154	DIAPHRAM, INK SYSTEM	1
208718	SPRING, COMPRESSION, ½", SST	1
355609	PUSHER, ADDER VALVE	1
213671	SPRING, COMPRESSION, TRANSFER PUMP	1
374809	FITTING, CHECK	1
370241	ROD RETAINER	2
SP370071	SWITCH, PROXIMITY	1
370170	TOOL, RETURN LINE	1

## Spare Parts Kit and Individual Spare Parts (*Triumph T120 Printer Only*)

### Spare Parts Kit

A spare parts kit, consisting of normal maintenance items for the **VIDEOJET®** Triumph T120 printer, is available through Videojet Technologies Inc. Individual items in the Spare Parts Kits are also available separately.

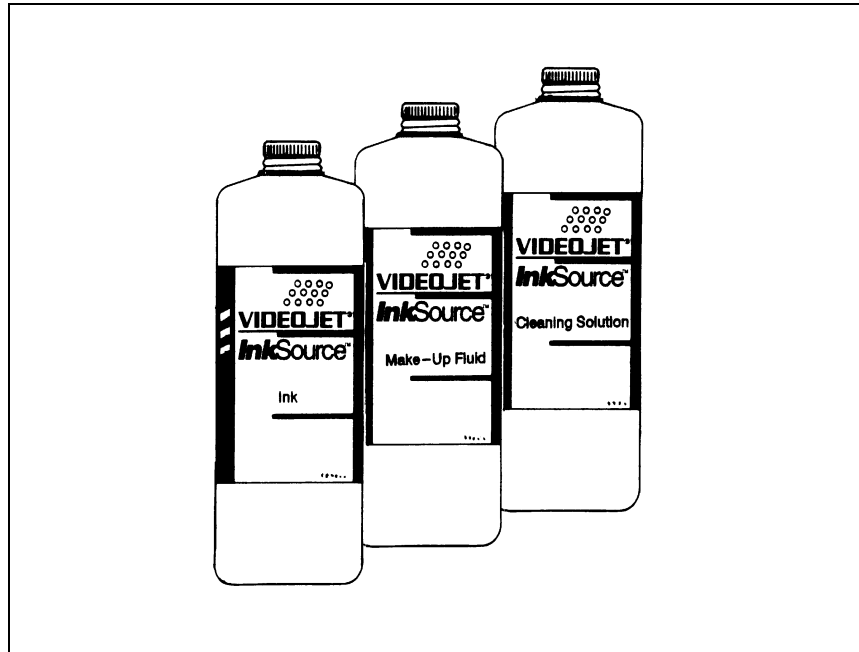
Standard Spare Parts Kit - P/N 374452

The **VIDEOJET®** Triumph T120 Spare Parts Kit consists of the following items:

Part Number	Description	Standard P/N 374452
SP356858	CATCHER	1
SP374435	NOZZLE	1
SP370180	INK VALVE, NON-AUTOFLUSH (STANDARD)	1
SP213144	VALVE, SOLENOID, 24V	1
SP390771	VALVE, TM	2
SP204446	DIFFERENTIAL PRESSURE SWITCH (INK LOW)	1
SP370551	BOTTLE FILTER	2
SP375007-01	INK FILTER	2
SP370246	FILTER, VACUUM, W/ O-RING	2
186514	HEX KEY, 0.050"	2
374441	HV GAP GAUGE	2
202047	WASH BOTTLE, 250ML	2
203806	TEE FITTING, PIPE, BRANCH, 1/4NPT	1
207407	VALVE, COMBINATION, DUCKBILL	4
208265	AIR FILTER, 30 MICRON, NYLON	1
204498	TUBING, THERMOPLASTIC, ¼" OD (BLACK)	6 FEET
208302	FITTING, BARBED, SWIVEL, ELBOW	4
209451	KEY, KEYBOARD LOCK	2
SP212321	REDURAN HAND CLEANER	1

Part Number	Description	Standard P/N 374452
343857	HEX KEY, 5/16"	2
374438	CHARGE TUNNEL, SST	1
355257	MAGNIFIER HOLDER ASSEMBLY	1
355269	MAGNIFIER, LOUPE SUBASSEMBLY	1
356230	FLOWMETER	1
365944-01	SAFETY INSTRUCTIONS, LATEX GLOVES, REDURAN	1
370045	CLEANING TRAY	1
370068	SCREW, SPECIAL HD, M3 X 8MM	1
370125	PRODUCT DETECT, SIMULATOR ASSEMBLY	1
370170	TOOL, RETURN LINE, 37E	1
91807200	GLOVES, LATEX, BOX	1
370154	DIAPHRAM, INK SYSTEM	1
208718	SPRING, COMPRESSION, ½", SST	1
355609	PUSHER, ADDER VALVE	1
213671	SPRING, COMPRESSION, TRANSFER PUMP	1
374809	FITTING, CHECK	1
370241	ROD RETAINER	2
SP370071	SWITCH, PROXIMITY	1

## Supplies



**Figure 3-21. Ink, Make-up Fluid, and Cleaning Solution**

A variety of **VIDEOJET®** inks, make-up fluids, and cleaning solutions suitable for your particular application are available through Videojet Technologies Inc.

Refer to Chapter 1, *Ordering Replacement Parts, Fluids, and Accessories*, on page 1-8, for information on obtaining **VIDEOJET®** supplies.



### Notes:

[illegible]